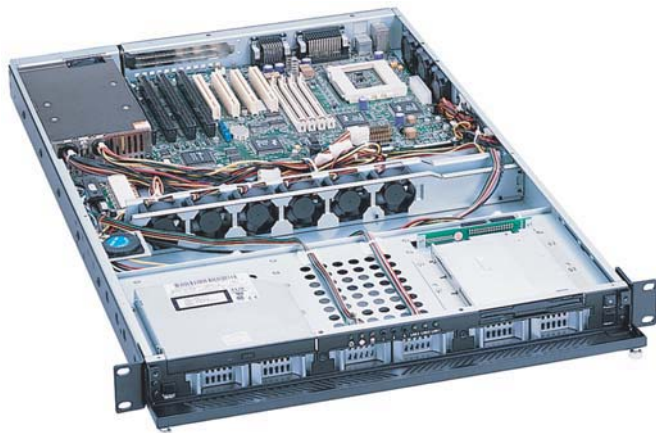


# CHASSIS PLANS

## F2CHASSIS



### Advantages

- Compact 1U x 25.6-inch (650mm) design
- Front door is fastened via thumb screws
- 150W- 300W ATX power supply (1U form factor)
- One 5.25-inch slim CD and one 3.5-inch slim FDD and three IDE, SATA or SCSI drive bays
- Removable rack ears for benchtop applications
- Six 7.0CFM center mount fans and three 8.6CFM rear mount fans are included

### Support

- Superior pre-sales and post-sales technical support
- All products carry a one year limited warranty

### Customization

- Custom paint and logo services available
- Front panel includes an indicator for disk drive activity.
- Nine internal fans provide positive pressurization of chassis

### Ordering Options

- F2CHASSIS-IDE - (3) Front mount IDE drives
- F2CHASSIS-SATA - (3) Front mount SATA drives
- F2CHASSIS-SCA - (3) Front mount SCSI drives



CHASSIS  
PLANS

The Original Industrial Computer Source™

Chassis Plans LLC 8295 Aero Place Suite 200 San Diego CA, 92123  
PH (858) 571-4330 FX (858) 571-6146  
sales@chassisplans.com  
©2005 Chassis Plans LLC

### F2CHASSIS

The F2 Series chassis is a high performance design in a low cost 1U rackmount enclosure. Feature rich, the F2 Series is a solid, robust design which will meet the most rigorous and demanding requirements. This chassis is ideal for high density server applications including collocation.

The enclosure is constructed of 18 gauge steel, clear zinc plated for corrosion protection and an attractive appearance. The front panel is attractively detailed and is of heavier gauge than the chassis.

There is more than ample drive storage. One slim CD and one slim floppy drive can be installed. In addition, three hot-swap SCSI, SATA or IDE drives can be installed.

A door covers and protects the drives. Accessible behind the door is the power and reset switches as well as the power-on and drive activity LED's. The LED's are visible through the door when it is closed.

The chassis is particularly well cooled for a 1U. Cooling is provided by six 40mm 7CFM ball bearing fans in addition to three 40mm 8.6FCM exhaust fans. The six fan group is mounted mid-chassis. Airflow is in over the drives and out the rear of the chassis.

The F2 Chassis provides for mounting a standard EATX motherboard up to 12 x 13-inches. One plug-in card can be installed using the included 32-bit riser card.

# SPECIFICATION

---

## Dimensions

19" (wide) x 1U (1.7") (high) x 25.6(deep)

Weight - 35 lbs / 16 kgs

## Drive Capacity

One slim CD drive - front accessible

One slim floppy drive - front accessible

Three hot swap IDE, SATA or SCSI drives - front accessible

## Front Panel Controls

Power switch - Black momentary pushbutton with 2 position .100 header for board connection

Reset switch - Black momentary pushbutton with 2 position .100 header for board connection

Power LED - green with 3 position .100 header for board connection

Drive Activity - Red with 2 position .100 header for board connection

Switch and LED connectors are labeled at the connector end.

## Rear Panel Details

1 Plug-in card slot

ATX I/O Shield

## Cooling

Six 40mm 7CFM cooling fans, three 40mm 8.6CFM exhaust fans

## Power Supply

Not included. Accepts 1U supply. Rear mounted.

Optional 12, 24 or 48VDC supplies available

## Motherboard Mounting

Standard 12 x 13 inch EATX motherboard

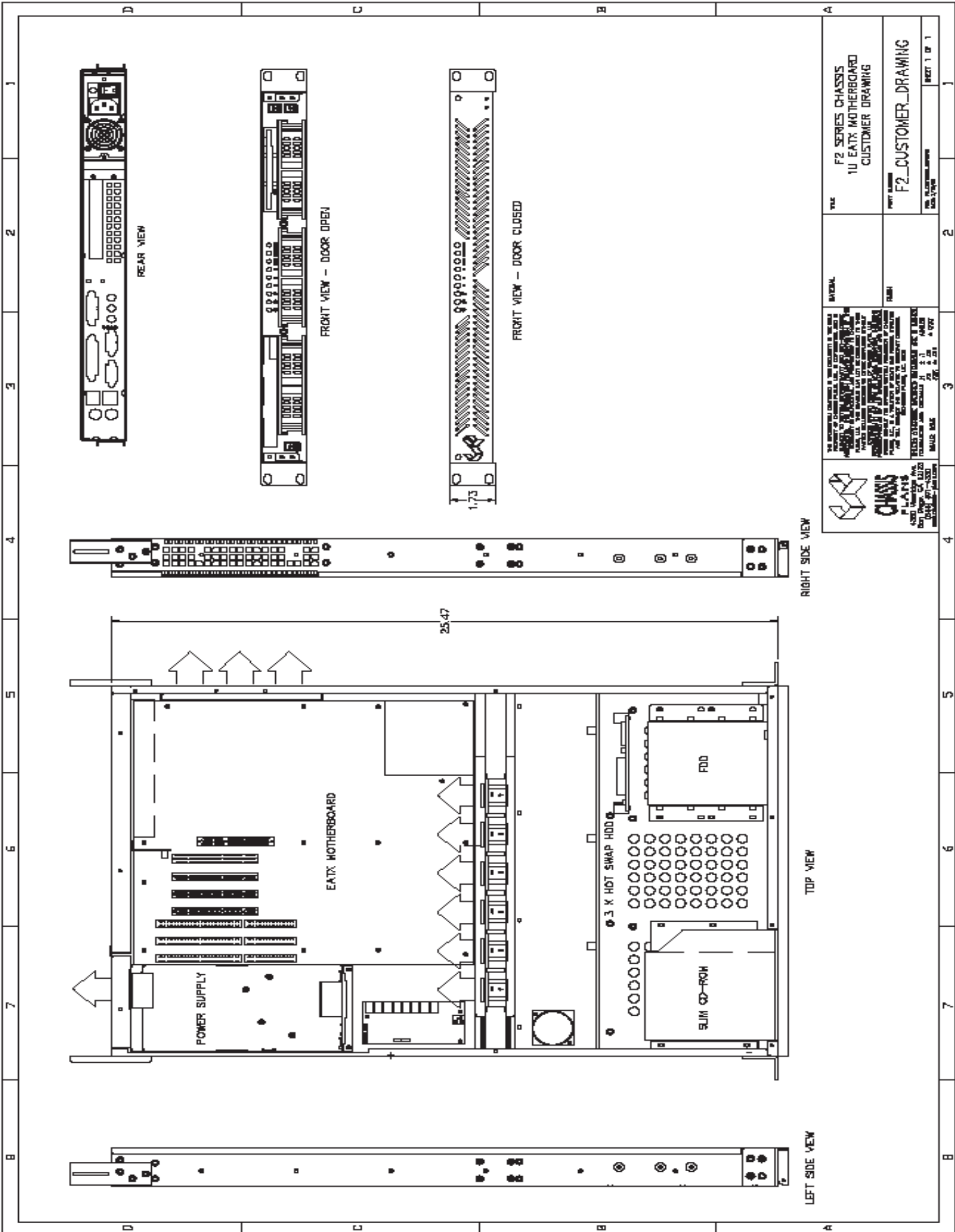
Motherboard adapter plate accommodates any motherboard

## Plug-in I/O Cards

Accommodates one plug-in I/O card

Includes 32-bit standard 5V PCI riser card





 <p><b>CHASSIS PLANS</b> 4500 North 10th Ave. San Diego, CA 92123 (619) 571-4330 www.chassisplans.com</p>		<p>PLEASE CONTACT US IMMEDIATELY IF YOU ARE A CUSTOMER OF CHASSIS PLANS, INC. AND YOU HAVE BEEN ADVISED TO RETURN TO US ANY OF OUR PRODUCTS. WE WILL REPAIR OR REPLACE ANY DEFECTIVE PRODUCT AT NO CHARGE TO YOU. WE WILL NOT BE RESPONSIBLE FOR ANY DAMAGE TO YOUR PRODUCT OR DATA. WE WILL NOT BE RESPONSIBLE FOR ANY DAMAGE TO YOUR PRODUCT OR DATA. WE WILL NOT BE RESPONSIBLE FOR ANY DAMAGE TO YOUR PRODUCT OR DATA.</p>	
TITLE	F2 SERIES CHASSIS 1U EATX MOTHERBOARD CUSTOMER DRAWING	INTERNAL	
PART NUMBER	F2_CUSTOMER_DRAWING	DATE	
REV.	001/1/2016	2	3
		<p>REV. 1 OF 1</p>	