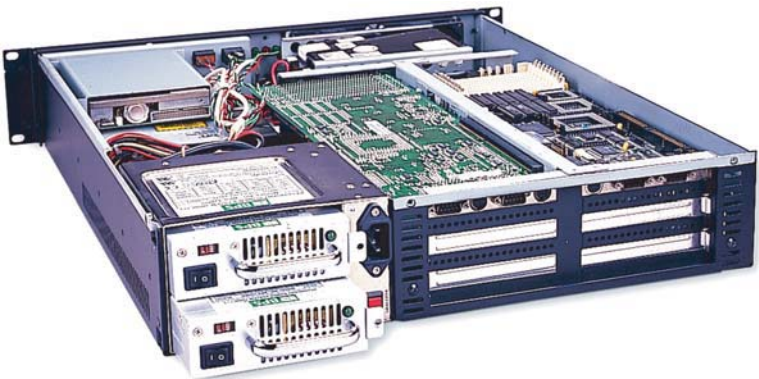


# CHASSIS PLANS

## E6000



### Advantages

- 2U x 20.7 inch depth design
- The E6 Chassis provides for mounting a standard SBC and 6 slot passive backplane
- Chassis can hold one front accessible 5-1/4 inch drive bay, one 3-1/2 inch drive bay and two internal 3-1/2 inch drive bays
- Cooling is provided by two front mount 80mm 42.5CFM fans

### Support

- Superior pre-sales and post-sales technical support
- All products carry a one year limited warranty

### Customization

- Custom paint and logo services available
- Custom mounting brackets are available



CHASSIS  
PLANS

The Original Industrial Computer Source™

### E6000

The E6000 Series chassis is a high performance design in a low cost 2U rackmount enclosure. Feature rich, the E6000 Series is a solid, robust design which will meet the most rigorous and demanding requirements. This chassis is ideal for high density I/O intensive applications.

The enclosure is constructed of 18 gauge steel, clear zinc plated for corrosion protection and an attractive appearance. The front panel is attractively detailed and is of heavier gauge than the chassis.

The E6000 provides for one externally accessible 5-1/4 inch, one external 3-1/2 inch and two internal 3-1/2 inch drive bays.

The chassis is cooled by two 80mm 42.5CFM ball bearing fans. Air flow is in through a front mounted air filter. The fans are mounted at to front panel to provide positive chassis pressure.

A door covers and protects the drives. Accessible behind the door is the power and reset switches as well as the power-on and drive activity LED's. The LED's are visible through the door when it is closed.

The E6000 Chassis provides for mounting a six slot passive backplane. The rear panel supports six plug-in cards. The backplane is not included in the chassis and a variety of backplanes are available.

# SPECIFICATION

---

## **Dimensions**

19" (wide) x 2U (3.5") (high) x 20.7" (deep)

Weight - 15.0kgs/33.1lbs

## **Drive Capacity**

One 5-1/4 inch drive - front accessible

One 3-1/2 inch drive - front accessible

Two 3-1/2 inch drives - internally mounted

## **Front Panel Controls**

Power switch

Reset switch

Power LED

Drive Activity LED

PS/2 Keyboard Port

## **Rear Panel Details**

6 Plug-in card slots

## **Cooling**

Two 80mm 42CFM fans

Fans are mounted mid-chassis to assist with drive cooling

## **Power Supply**

Accepts rear mount PS/2 style 300W to 460W power supplies, supply not included

Optional redundant rear mount PS/2 style power supplies available

Optional 12, 24 or 48VDC supplies also available

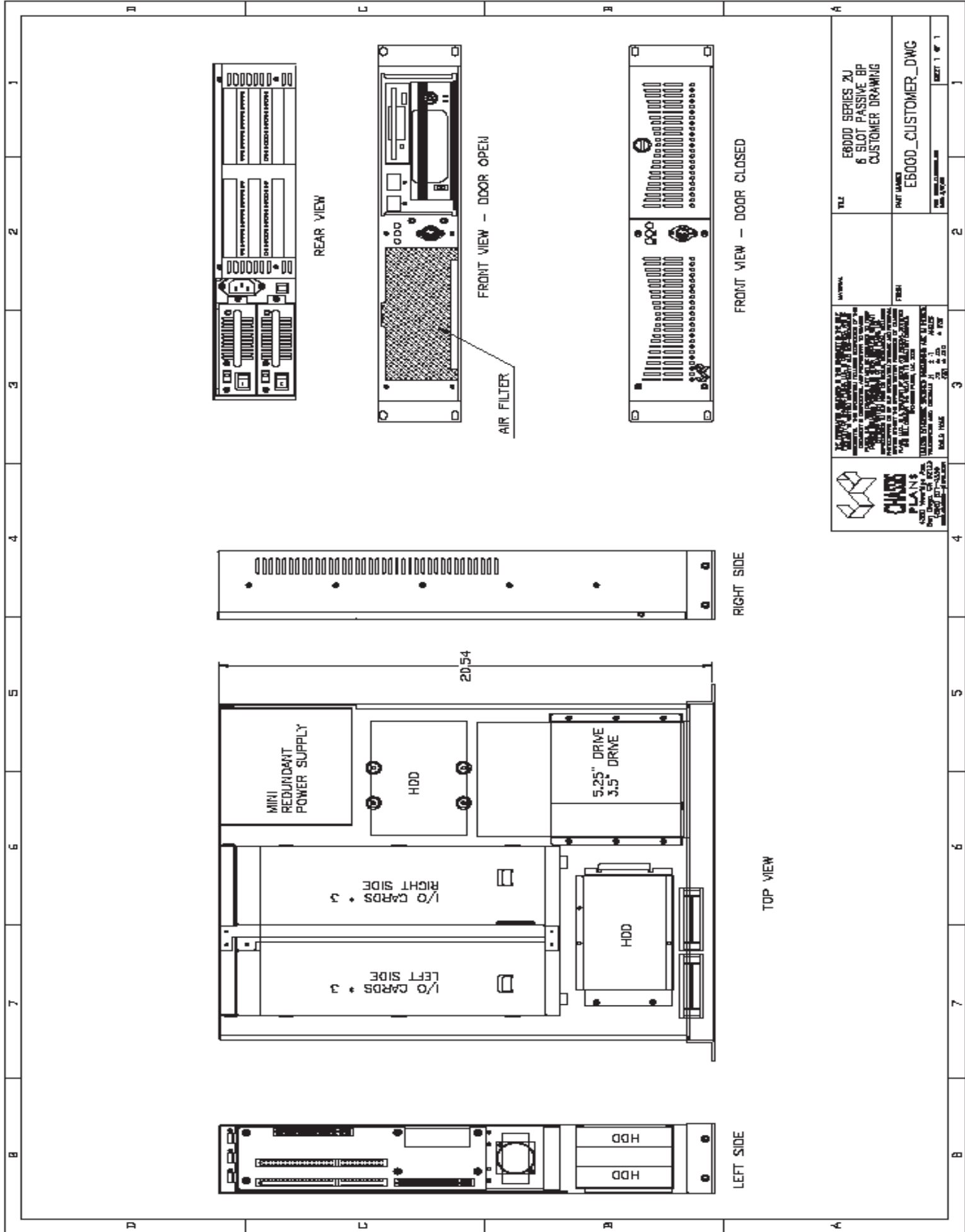
## **Plug-in I/O Cards**

Accommodates three plug-in cards

Full length cards supported



The Original Industrial Computer Source™



<p><b>CHASSIS PLANS</b>  <small>10000 W. WOODS RD. #200  SAN DIEGO, CA 92123  TEL: (619) 571-4330  WWW.CHASSISPLANS.COM</small></p>		<p><small>WE DESIGN, MANUFACTURE AND ASSEMBLE A FULL LINE OF INDUSTRIAL AND COMMERCIAL CHASSIS PRODUCTS. WE ARE A 100% EMPLOYED AND OWNED COMPANY. OUR PRODUCTS ARE DESIGNED TO BE RELIABLE, DURABLE AND EASY TO MAINTAIN. WE OFFER A FULL RANGE OF CUSTOMIZATION OPTIONS TO MEET YOUR SPECIFIC REQUIREMENTS. CONTACT US TODAY FOR A FREE QUOTE AND CATALOG.</small></p>	
TITLE	EB000 SERIES 2U 6 SLOT PASSIVE BP CUSTOMER DRAWING	DATE	1
PART NUMBER	EB000_CUSTOMER_DWG	REV.	1
DATE	11/11/11	BY	1