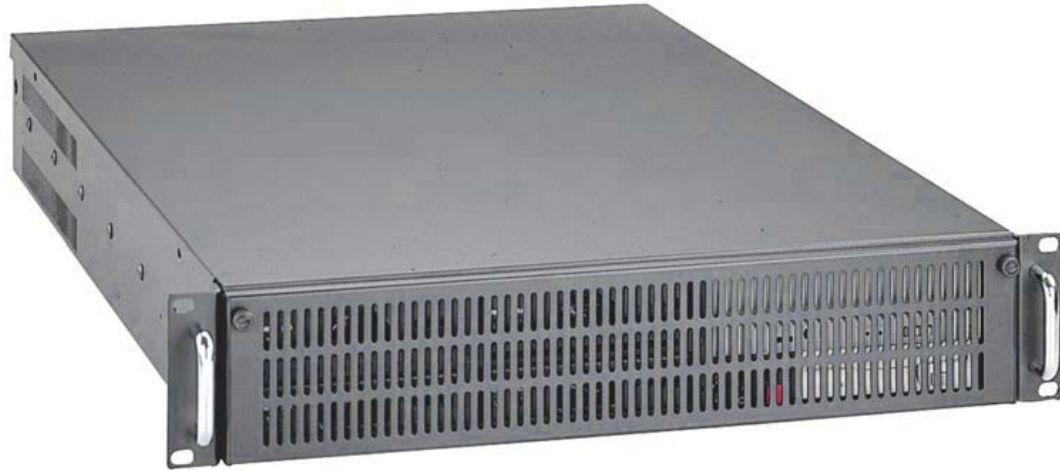


CHASSIS PLANS

E5CHASSIS



Advantages

- 2U x 25.6 inch depth design
- Supports EATX (12x13-inch) motherboard
- Four hot swap drive bays (SATA, SCSI, EIDE) with one 5-1/4 inch and one 3-1/2 inch drive bay
- Thermal Management card
- Four 42.5CFM fans
- Two I/O slots

Support

- Fully integrated solutions available
- Superior pre-sales and post-sales technical support
- All products carry a two year limited warranty

Customization

- Various power options
- Custom paint and logo available
- Custom modifications to customer specification
- Four 42.5CFM fans can be replaced with higher or lower flow fans



The Original Industrial Computer Source®

Chassis Plans · 8295 Aero Place · San Diego · CA · 92123
 Phone (858) 571-4330 · Fax (858) 571-6146
 saleseng@chassisplans.com
 www.chassisplans.com
 © 2005 Chassis Plans

E5CHASSIS

The E5 Series chassis is a high performance design in a low cost 2U rackmount enclosure. Feature rich, the E5 Series is a solid, robust design which will meet the most rigorous and demanding requirements. This chassis is ideal for high density I/O intensive applications.

The enclosure is constructed of 18 gauge steel, clear zinc plated for corrosion protection and an attractive appearance. The front panel is attractively detailed and is of heavier gauge than the chassis.

The E5 provides for one externally accessible 5-1/4 inch and one 3-1/2 inch drive bays. In addition, four hot swap IDE drives provide for a large amount of low cost IDE drive space. The IDE drives can easily be configured for a large RAID. The E5 is ideal for cost sensitive data intensive or mission critical applications.

The chassis is cooled by four 80mm 42CFM ball bearing fans. Air flow is in through a front mounted air filter. The fans are mounted mid-chassis to help cool the drives. A thermal management card monitors fan operation and chassis temperature providing both an audible alarm and contact closure output.

A door covers and protects the drives. Accessible behind the door are the power and reset switches as well as the power-on and drive activity LED's. The LED's are visible through the door when it is closed.

The E5 Chassis provides for mounting a standard EATX motherboard up to 12 x 13 inches. Two plug-in cards can be installed using the included riser card. Additionally, several riser card options are available.

Dimensions

19" (wide) x 2U (3.5") (high) x 25.6" (deep); Weight - 28.6 lbs / 13 kgs

Drive Capacity

One 5-1/4 inch drive - front accessible

One 3-1/2 inch drive - front accessible

Four hotswap IDE drives

Front Panel Controls

Power switch, Reset switch, Alarm reset switch, Power LED, Drive Activity LED

Rear Panel Details

Two Plug-in card slots

ATX I/O Shield

Cooling

Four 80mm 42CFM fans

Fans are mounted mid-chassis to assist with drive cooling

Thermal Management Board

Monitors the following chassis parameters. Audible alarm sounded on system failure. Rear panel mounted terminal block for NO/NC contact closure for external alarm.

- Fan operation
- Chassis over-temperature settable for 40, 50, 60 deg C alarm point
- Two remote chassis temperature probes.
- Power supply operation
- Front panel indication of system alarm status

Power Supply

Rear Mount 2U style

AC Supply - Zippy P2U or P2G form factor

DC Supply - D2U form factor, 48VDC only available

AC Redundant Supply - Zippy R2G form factor, requires special E5 rear panel

Power supply not included.

Motherboard Mounting

Standard EATX 12 x 13-inch motherboard

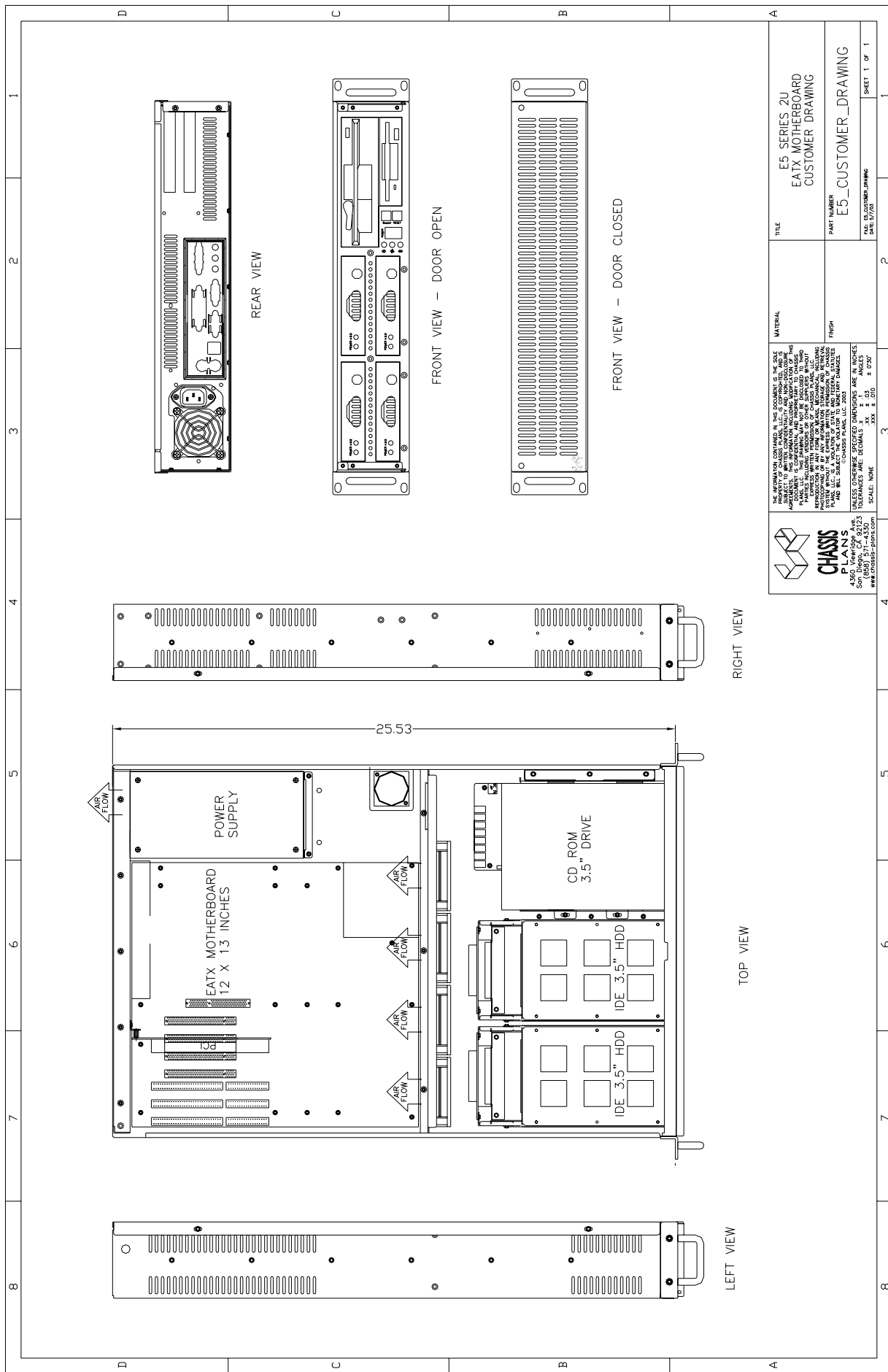
Motherboard adapter plate accommodates any motherboard

Plug-in I/O Cards

Accommodates three plug-in I/O cards

Full length cards supported

Includes 3-slot 32-bit standard 5V PCI riser card



<p>THE INFORMATION CONTAINED IN THIS DOCUMENT IS THE SOLE PROPERTY OF CHASSIS PLANS. IT IS TO BE USED ONLY FOR THE PROJECT AND FOR THE SPECIFIC HARDWARE AND SOFTWARE PLATFORMS IDENTIFIED HEREIN. IT IS NOT TO BE REPRODUCED, COPIED, TRANSMITTED, OR DISTRIBUTED IN ANY MANNER WITHOUT THE WRITTEN PERMISSION OF CHASSIS PLANS. CHASSIS PLANS ASSUMES NO LIABILITY FOR ANY DAMAGE, INCLUDING INCIDENTAL OR CONSEQUENTIAL DAMAGES, ARISING FROM THE USE OF THIS INFORMATION. © CHASSIS PLANS, LLC 2003</p>		<p>TITLE E5 SERIES 2U EATX MOTHERBOARD CUSTOMER DRAWING</p>
<p>MATERIAL</p>		<p>PART NUMBER E5_CUSTOMER_DRAWING</p>
<p>FINISH</p>		<p>DATE 07/2003 SHEET 1 OF 1</p>
<p>UNITS: DIMENSIONS: DIMENSIONS ARE IN INCHES UNLESS OTHERWISE SPECIFIED TOLERANCES: DECIMALS: .0010" F 0.005" FRACTIONS: 1/16" F 0.015" SCALE: NONE</p>		

CHASSIS PLANS
 14850 S. DEER CREEK AVENUE
 SAN DIEGO, CA 92123
 (619) 571-4330
 WWW.CHASSIS-PLANS.COM