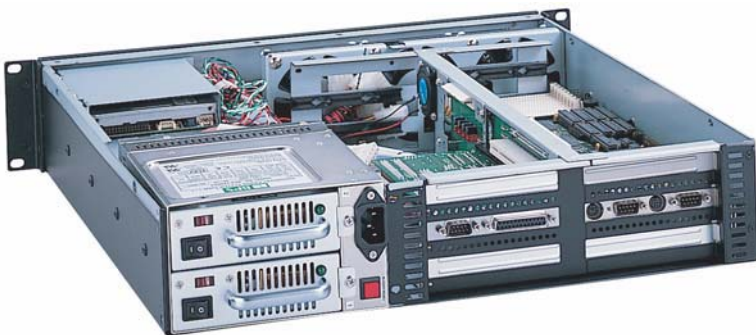


# CHASSIS PLANS

## E1000



### Advantages

- Compact 2U x 17.7-inch (450mm) design
- Front door provides drive security
- 300W- 460W PS/2 power supply
- Three drive bays with one slim CD and Slim FD with one 3.5" internal drive bay
- Removable rack ears for benchtop applications
- Three 42.5CFM fans are mounted internally to protect internal components and feature cards

### Support

- Superior pre-sales and post-sales technical support
- All products carry a two year limited warranty

### Customization

- Custom paint and logo services available

## E1000

The E1000 Series chassis is a high performance design in a low cost 2U rackmount enclosure. Feature rich, the E1000 Series is a solid, robust design which will meet the most rigorous and demanding requirements. This chassis is ideal for high density I/O intensive applications where a single board computer is desired.

The enclosure is constructed of 18 gauge steel, clear zinc plated for corrosion protection and an attractive appearance. The front panel is attractively detailed and is of heavier gauge than the chassis.

The E1000 provides for one 5.25 inch and one 3.5 inch drive externally accessible. Alternatively, a slim CD-ROM and internal 3.5 inch drive may be installed in place of the 5.25 inch drive. The drive cage and filler provide for several configurations.

The chassis is cooled by three high velocity 80mm 42.5CFM ball bearing fans which draw through a front accessible filter and provide positive air pressure to the chassis.

A door covers and protects the drives. Accessible behind the door is the power and reset switches as well as the power-on and drive activity LED's. The LED's are visible through the door when it is closed. A USB connector is provided at the front panel.

The E1000 Chassis provides for mounting a butterfly style 6-slot passive backplane. Six standard plug-in cards can be installed.

A standard PS/2 power supply will fit allowing several power options.

# SPECIFICATION

---

## Dimensions

19" (wide) x 2U (3.5") (high) x 17.7" (deep)

## Drive Capacity

One 5-1/4 inch drive - front accessible

One 3-1/2 inch drive - front accessible

-- or --

One 3-1/2 inch drive - front accessible

One slim CD-ROM - front accessible

One 3-1/2 inch drive -internal

## Front Panel Controls

Power switch - Black momentary pushbutton with 2 position .100 header for board connection

Reset switch - Black momentary pushbutton with 2 position .100 header for board connection

Power LED - green with 3 position .100 header for board connection

Drive Activity - Red with 2 position .100 header for board connection

Dual USB ports

Switch and LED connectors are labeled at the connector end

## Rear Panel Details

6 Plug-in card slots

## Cooling

Three 80mm 42.5CFM fans with tach signal

Positive chassis pressure

## Power Supply

300W to 460W PS/2 form factor, not included

AC Input - Zippy HG2, HP2, PSM, PSL, AX2, SP2, LP2, MP2 & SPE

Redundant AC Input - Zippy MRT, MRP, MRW, MRG

DC Input - Zippy DB2 (24VDC), DD2 (48VDC), MB2 (24VDC), MD2 (48VDC)

## Backplane Mounting

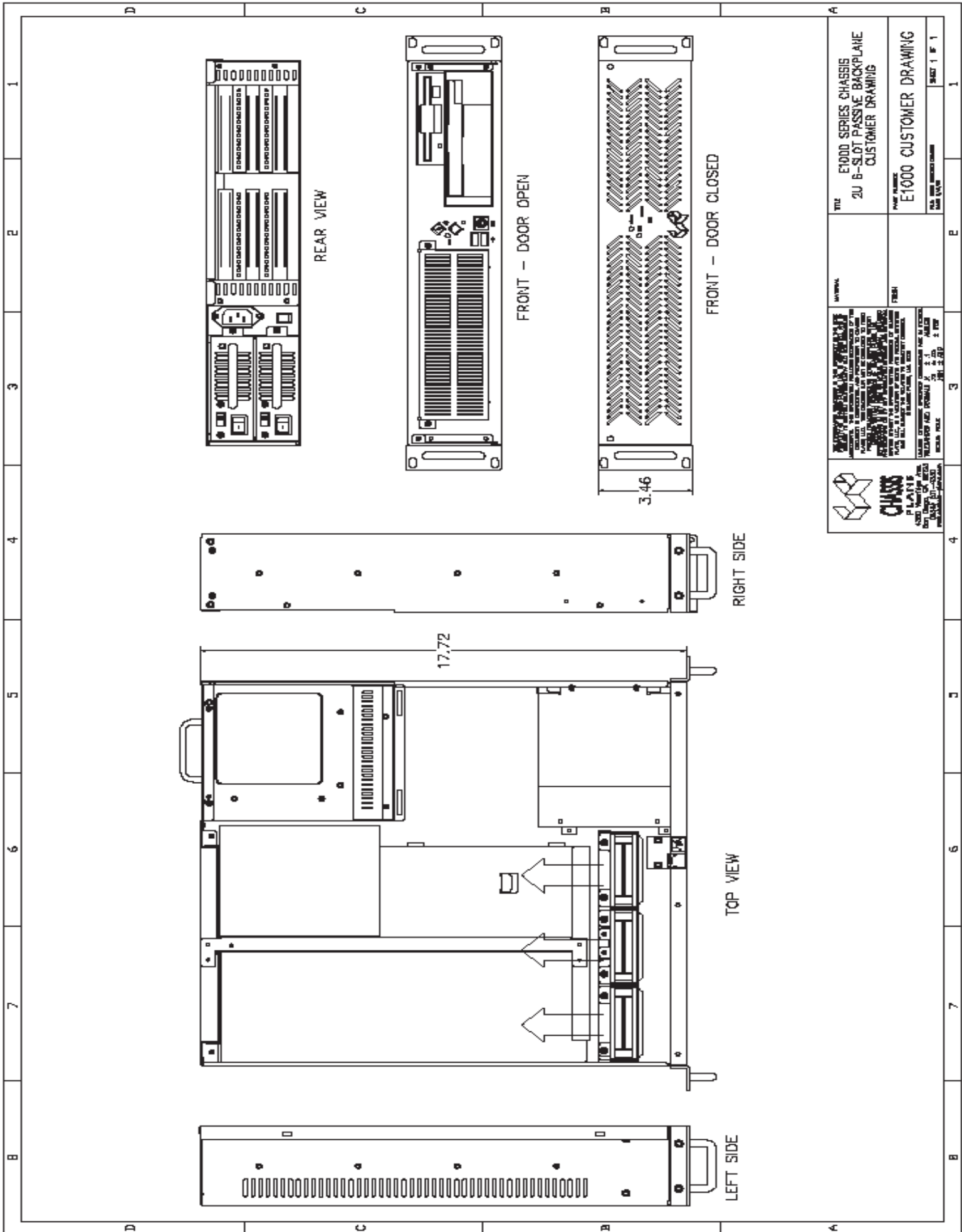
Accepts 6-slot butterfly backplane

## Plug-in I/O Cards

Accommodates five plug-in I/O cards



The Original Industrial Computer Source <sup>TM</sup>



 <b>CHASSIS PLANS</b> 4000 VALLEY AVE SAN DIEGO, CA 92123 (858) 571-4330		TITLE: E1000 SERIES CHASSIS 2U B-SLOT PASSIVE BACKPLANE CUSTOMER DRAWING	
PART NUMBER: E1000 CUSTOMER DRAWING		SHEET 1 OF 1	
MATERIAL: PEEK		DATE: 08/20/2018	
DRAWING APPROVED BY: [Signature] DATE: 08/20/2018		CHECKED BY: [Signature] DATE: 08/20/2018	