

CHASSIS PLANS

D4CHASSIS



Advantages

- Compact 3U x 15.7-inch (400mm) design
- 250W- 300W 2U power supply
- One 5.25-inch externally accessible drive bay can be used for a slim-line CD and floppy or standard 5.25-inch device.
- Removable rack ears for benchtop applications
- Two front mount 42.5CFM fans and two rear mount 7CFM fans protect feature cards and drives from temperature degradation

Support

- Superior pre-sales and post-sales technical support
- All products carry a one year limited warranty

Customization

- Custom paint and logo services available
- Front panel includes an indicator for disk drive activity.



CHASSIS
PLANS

The Original Industrial Computer Source™

Chassis Plans LLC, 8295 Aero Drive, Ste. 200, San Diego CA, 92123
 PH (858) 571-4330 FX (858) 571-6146
 salesteam@chassisplans.com
 ©2005 Chassis Plans LLC

D4 CHASSIS

The D4 Series chassis is a medium performance design in a low cost 3U rackmount enclosure. The D4 Series is a solid, robust design which will meet the most rigorous and demanding requirements. This chassis is simple in design and is ideal for low cost internet appliance or dedicated controller application. This is your basic no frills 3U chassis.

The enclosure is constructed of 18 gauge steel, clear zinc plated for corrosion protection and an attractive appearance. The front panel is attractively detailed and is of heavier gauge than the chassis.

The D4 provides one externally accessible 5-1/4 inch drive bay that can be populated with a standard half-height 5-1/4 inch device or a combination slim CD / slim floppy drive.

The front panel is flat with no door or filter. Front panel LED indicators include power and drive activity. The power and reset switches are on the rear panel.

Cooling is provided by two 42.5CFM fans blowing into the chassis plus two 7CFM exhaust fans. There is no air filter.

The D4 Chassis provides for mounting a standard ATX motherboard up to 9.6 x 12 inches. Six plug-in cards can be installed.

Power is provided by a 2U style power supply. Several power options are available including DC operation.

SPECIFICATION

Dimensions

19" (wide) x 3U (5.20") (high) x 15.7" (deep)

Drive Capacity

One 5-1/4 inch drives - front accessible

Two 3-1/2 inch drive - internal

Front Panel Controls

Power LED - green with 3 position .100 header for board connection

Drive activity - red with 2 position .100 header for board connection

Rear Panel Details

Power Switch

Reset Switch

6 Plug-in card slot

ATX I/O Shield

One DB25 connector knockout

One SCSI connector knockout

Cooling

Two 42.5CFM cooling fans

Two 7CFM exhaust fans

One 23.5CFM exhaust fan (optional)

Power Supply

Rear Mount 2U style

AC supply - Zippy P2U or P2G form factor

DC supply - D2U form factor (48VDC only available)

Power supply not included.

Motherboard Mounting

Standard 9.6 x 12 inch ATX motherboard

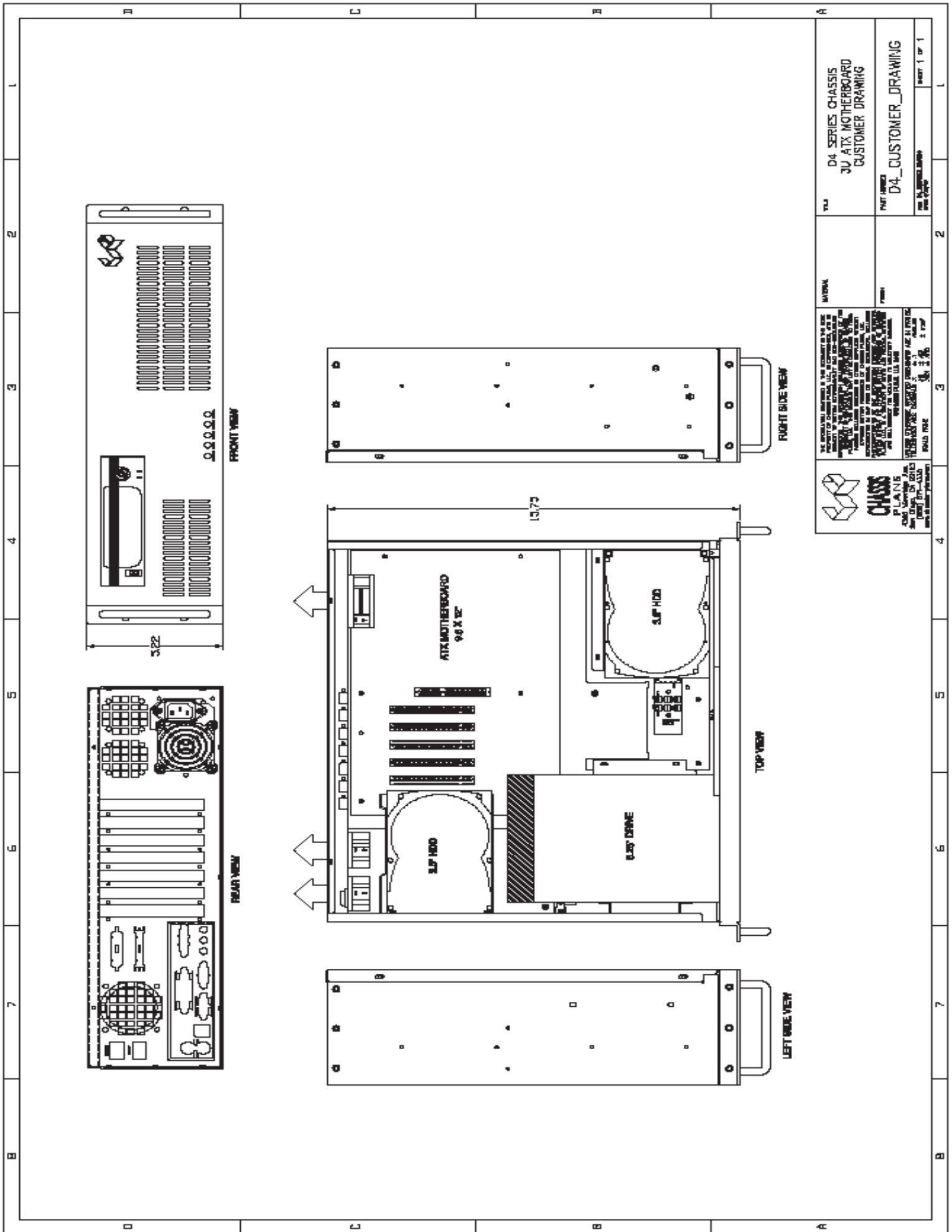
Motherboard adapter plate accommodates any motherboard

Plug-in I/O Cards

Accommodates six plug-in I/O cards



The Original Industrial Computer Source TM



TITLE	D4 SERIES CHASSIS 3U ATX MOTHERBOARD CUSTOMER DRAWING
MATERIAL	
PART NUMBER	D4_CUSTOMER_DRAWING
DATE	08/20/2010
DESIGNER	SALESTEAM@CHASSISPLANS.COM
SCALE	AS SHOWN
SHEET	1 OF 1