

CHASSIS PLANS

CPS219



- **Rack Mount—Only 1RU (1.75")**
- **Keyboard w/ Trackball or Touch Pad**
- **Samsung 19" TFT LCD**
- **1280 x 1024 XGA Max Resolution**
- **Analog & Digital Video Input**
- **16.7Million Display Colors**
- **Lockout Slides to Prevent Movement**
- **Captive Thumb Screws**

The CPS219 is a high performance 1U 19" LCD display/keyboard drawer. The display is a high quality Samsung 19" TFT LCD with a maximum resolution of 1280 x 1024. Included is a high quality low profile 83 key keyboard with integrated track ball or touch pad. The display is stowed flat behind the keyboard and tilts up for use. The drawer is held closed by two captive thumb screws. Lock out ball bearing slides are included along with mounting brackets to allow installation in any standard 19" rack, 26" to 36" deep.

The display offers 500:1 contrast ratio and a brightness of 250cd/m². The response time is a fast 12.5mS and the viewing angle is 140° vertical and horizontal. Both a high density VGA connector and DVI-D connector are provided for video input. The keyboard is available with either PS/2 or USB connections.

A variety of KVM switches can be fitted to the rear to allow this one display/keyboard to control up to 16 computers.

As with all Chassis Plans products, a wide variety of custom options are available including paint color, customer logo, touch screens, contrast filters, transmissive daylight modification, and hard coated vandal shields. Lightweight aluminum versions are available for transit case installation.



Dimensions

19" (wide) x 1.75" (high)
 Mounting for 27" to 38" rack depth

Display

19" SAMSUNG TFT/LCD Panel
 Display Resolution: SXGA 1280 X 1024
 Display Colors: 16.7 Million
 Display area: 376.3mm x 301.1mm (19" diagonal)
 Contrast Ratio: 500:1 typical
 Brightness: 250 cd/m2 typical
 Pixel Pitch: 0.297mm x 0.297mm
 Viewing Angle (U/D/L/R): 70/70/70/70 deg
 Response Time (mS @ 25°C): <12.5
 Video Input Connector:
 VGA: 15-pin high density DB-15
 DVI: Standard DVI-D connector
 Power Management: EPA Energy Star, VESA DPMS

Display Resolution Modes

VESA VGA/SVGA/XGA/SXGA
 Recommended Resolution: 1280 x 1024 @ 60Hz
 640 x 350 @ 60Hz
 640 x 400 @ 70Hz
 Mac VGA
 640 x 480 @ 60,72,75Hz
 Mac SVGA
 720 x 400 @ 70Hz
 Mac XGA
 800 x 600 @ 56,60,72,75Hz
 1024 x 768 @ 60,70,75Hz
 1280 x 1024 @ 60, 70, 75Hz

On Screen Display

Adjustment

Brightness
 Contrast
 Clock
 Phase
 Auto Adjust

Color Temp

6500K/9300K/User

Setup

Image (Hor Position, Vert Position, Gamma)
 OSD (Language, Color, Position, Duration, Lock)
 Mode Recall
 Backlight
 Auto Sleep

Keyboard

PS/2 or USB Connection
 Tactile Keystroke
 5,000,000 lifecycles per switch
 Power: +5 DC @ 100 mA max
 Synchronous 8-bit data

Trackball Option

Integrated in keyboard
 16mm ball
 PS/2 Compatible
 Various resolution from 20—6400 dpi
 Tracking speed 500 mm/sec
 Two "mouse" keys



Touch Pad Option

Integrated in Keyboard
 Three 'mouse' keys

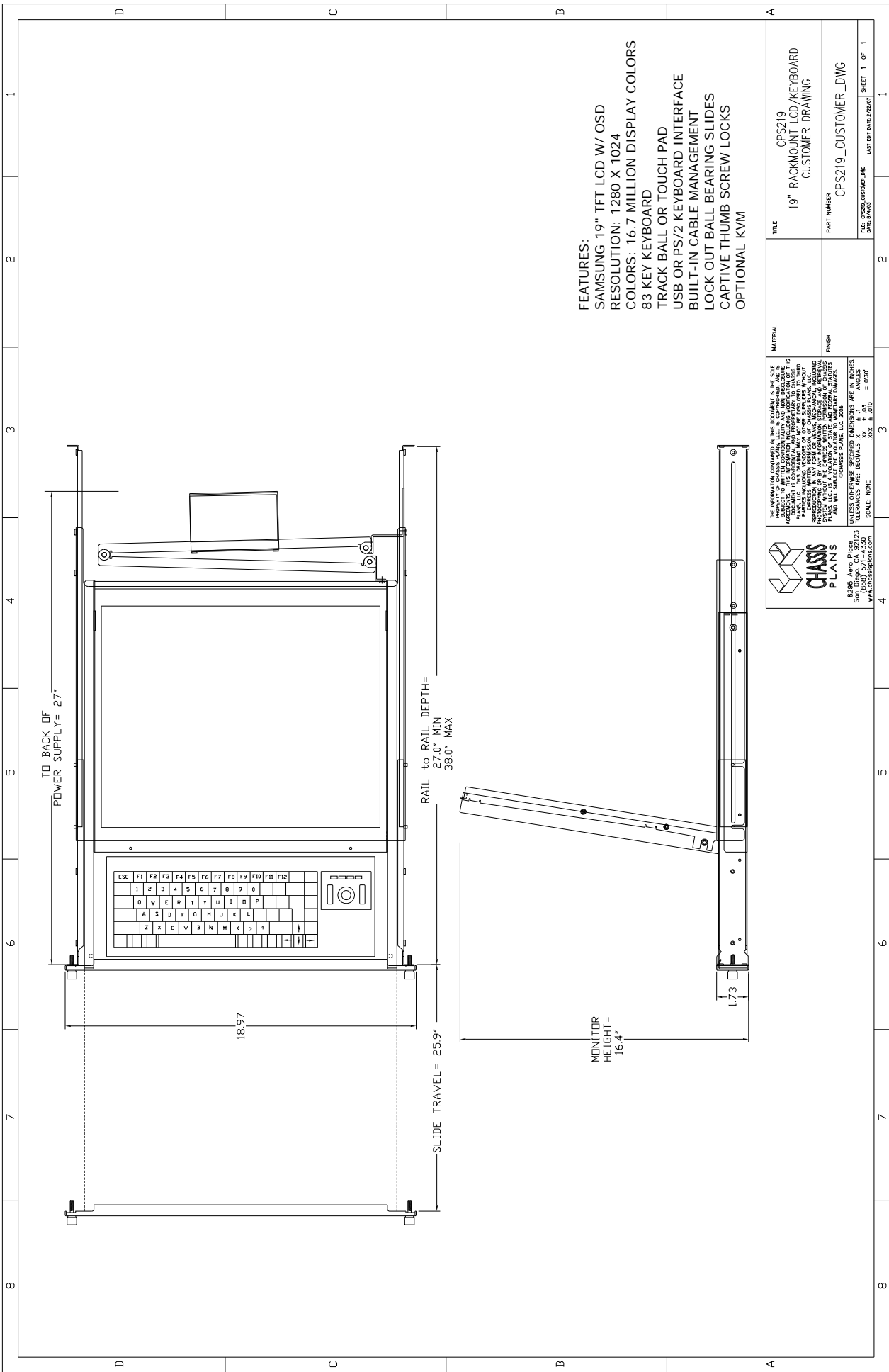


Agency Approvals

FCC-B, EMI/EMC/CE/BSMI

Ordering Guide

Model	Pointing Device	Keyboard Interface
CPS219-UTB	Trackball	USB
CPS219-UTP	Touch Pad	USB
CPS219-PTB	Trackball	PS/2
CPS219-PTP	Touch Pad	PS/2



FEATURES:
 SAMSUNG 19" TFT LCD W/ OSD
 RESOLUTION: 1280 X 1024
 COLORS: 16.7 MILLION DISPLAY COLORS
 83 KEY KEYBOARD
 TRACK BALL OR TOUCH PAD
 USB OR PS/2 KEYBOARD INTERFACE
 BUILT-IN CABLE MANAGEMENT
 LOCK OUT BALL BEARING SLIDES
 CAPTIVE THUMB SCREW LOCKS
 OPTIONAL KVM

CHASSIS PLANS 8205 Ave. Plaza San Diego, CA 92123 www.chassisplans.com	THE INFORMATION CONTAINED IN THIS DOCUMENT IS THE SOLE PROPERTY OF CHASSIS PLANS, LLC. IT IS UNCLASSIFIED, AND IS APPROVED FOR RELEASE BY THE NATIONAL ARCHIVES AND RECORDS ADMINISTRATION. THIS INFORMATION INCLUDES MODIFICATION OF THE ORIGINAL DOCUMENT. THIS INFORMATION IS TO BE CONTROLLED TO THE EXTENT THAT IT IS CONTAINED IN THIS DOCUMENT. ALL INFORMATION CONTAINED HEREIN IS UNCLASSIFIED EXCEPT WHERE SHOWN OTHERWISE. DATE OF DECLASSIFICATION: 01/01/2011. AUTHORITY: 5010-108.	MATERIAL FINISH	TITLE CPS219 19" RACKMOUNT LCD/KEYBOARD CUSTOMER DRAWING
8205 Ave. Plaza San Diego, CA 92123 www.chassisplans.com	THESE DIMENSIONS ARE IN INCHES. TOLERANCES ARE: DECIMALS ± .010, ANGLES ± .030° FRACTIONS ± .005, DIA. ± .002, HOLE ± .002 SCALE: NONE	PART NUMBER CPS219_CUSTOMER_DWG	SHEET 1 OF 1 DATE: 05/22/09 LAST ENT: DATE: 05/22/09