

CHASSIS PLANS

CPS217



- **Rack Mount—Only 1RU (1.75")**
- **Keyboard w/ Trackball or Touch Pad**
- **Samsung 17" TFT LCD**
- **1280x1024 Max Resolution**
- **16.7Million Display Colors**
- **Lockout Slides to Prevent Movement**
- **Captive Thumb Screws**

The CPS217 is a high performance 1U 17" LCD display/keyboard drawer. The display is a high quality Samsung 17" TFT LCD with a maximum resolution of 1280x1024. Included is a high quality low profile 83 key keyboard with integrated track ball or touch pad. The display is stowed flat behind the keyboard and tilts up for use. The drawer is held closed by two captive thumb screws. Lock out ball bearing slides are included along with mounting brackets to allow installation in any standard 19" rack, 26" to 36" deep.

The display offers 500:1 contrast ratio and a brightness of 270cd/m². The response time is a fast 12.5mS and the viewing angle is 120° vertical and 140° horizontal. Video input is via a standard high density DB15 and the keyboard is available with either PS/2 or USB connections.

A variety of KVM switches can be fitted to the rear to allow this one display/keyboard to control up to 16 computers.

As with all Chassis Plans products, a wide variety of custom options are available including paint color, customer logo, touch screens, contrast filters, transmissive daylight modification, and hard coated vandal shields. Lightweight aluminum versions are available for transit case installation.



Dimensions

19" (wide) x 1.75" (high)
Mounting for 26" to 36" rack depth

Display

17" SAMSUNG TFT/LCD Panel
Display Resolution: SXGA 1280x1024
Display Colors: 16.7 Million
Display area: 337.9mm x 270.3 mm (17" diagonal)
Contrast Ratio: 500:1 typical
Brightness: 270 cd/m² typical
Pixel Pitch: 0.264mm x 0.264m
Viewing Angle (U/D/L/R): 60/60/70/70 deg
Response Time (mS @ 25°C): <12.5
Connector: 15-pin high density DB-15
Power Management: EPA Energy Star, VESA DPMS

Display Resolution

VESA VGA/SVGA/XGA/SXGA
Recommended Resolution: 1280x1024 @ 60Hz
640 x 350 @ 60Hz
640 x 400 @ 70Hz
Mac VGA
640 x 480 @ 60,72,75Hz
Mac SVGA
720 x 400 @ 70Hz
Mac XGA
800 x 600 @ 56,60,72,75Hz
1024 x 768 @ 60,70,75Hz
1280x1024 @ 60, 70, 75Hz

On Screen Display

Adjustment

- Brightness
- Contrast
- Clock
- Phase
- Auto Adjust

Color Temp

6500K/9300K/User

Setup

- Image(Hor Position, Vert Position, Gamma)
- OSD (Language, Color, Position, Duration, Lock)
- Mode Recall
- Backlight
- Auto Sleep

Keyboard

PS/2 or USB Connection
Tactile Keystroke
5,000,000 lifecycles per switch
Power: +5 DC @ 100 mA max
Synchronous 8-bit data

Trackball Option

Integrated in keyboard
16mm ball
PS/2 Compatible
Various resolution from 20—6400 dpi
Tracking speed 500 mm/sec
Two "mouse" keys



Touch Pad Option

Integrated in Keyboard
Three 'mouse' keys

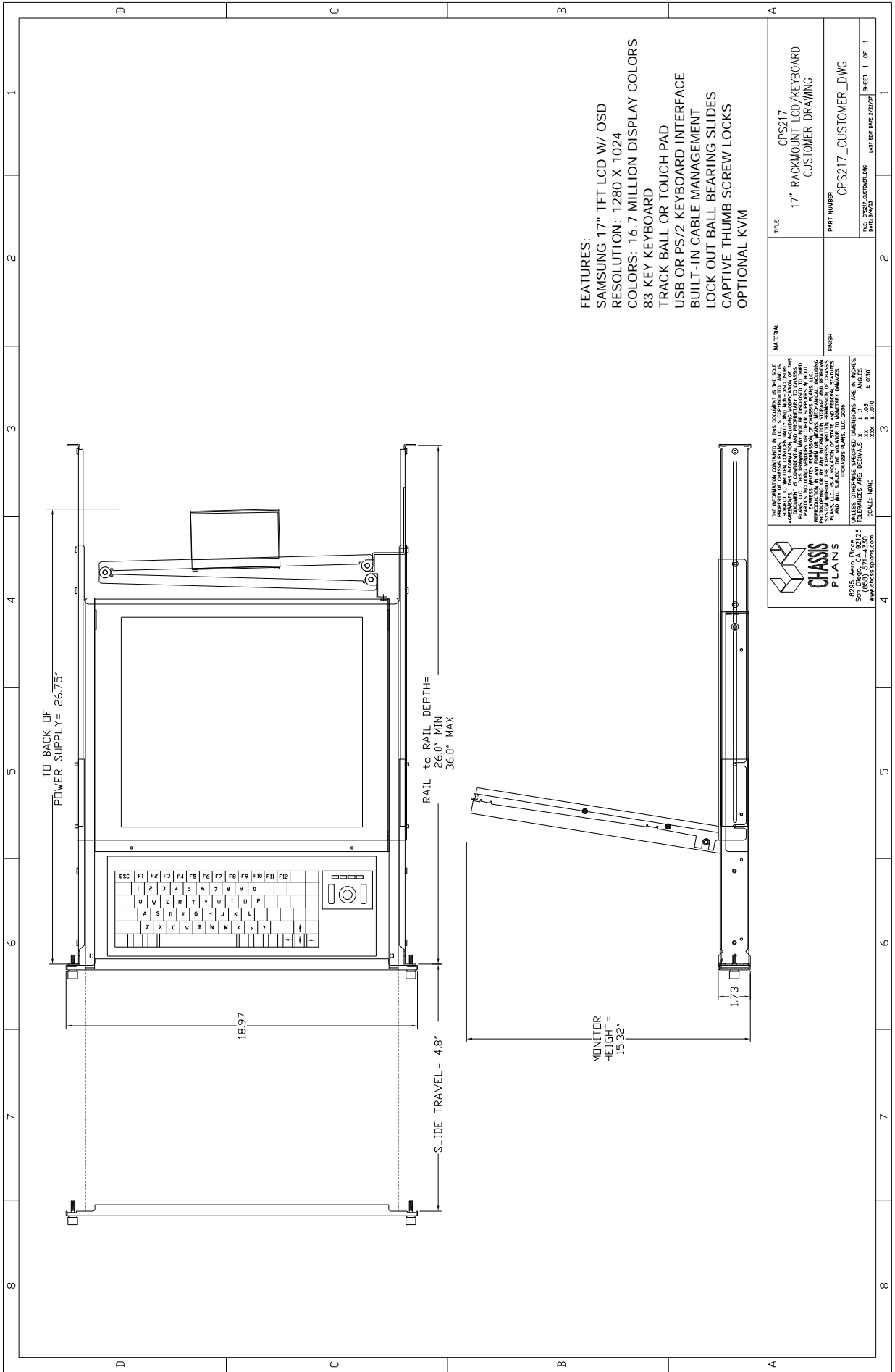


Agency Approvals

FCC-B, EMI/EMC/CE/BSMI

Ordering Guide

| Model | Pointing Device | Keyboard Interface |
|------------|-----------------|--------------------|
| CPS217-UTB | Trackball | USB |
| CPS217-UTP | Touch Pad | USB |
| CPS217-PTB | Trackball | PS/2 |
| CPS217-PTP | Touch Pad | PS/2 |



FEATURES:
 SAMSUNG 17" TFT LCD W/ OSD
 RESOLUTION: 1280 X 1024
 COLORS: 16.7 MILLION DISPLAY COLORS
 83 KEY KEYBOARD
 TRACK BALL OR TOUCH PAD
 USB OR PS/2 KEYBOARD INTERFACE
 BUILT-IN CABLE MANAGEMENT
 LOCK OUT BALL BEARING SLIDES
 CAPTIVE THUMB SCREW LOCKS
 OPTIONAL KVM

| | |
|---|--|
| TITLE CPS217 17" RACKMOUNT LCD/KEYBOARD CUSTOMER DRAWING | |
| PART NUMBER CPS217_CUSTOMER_DWG | |
| DATE: 05/15/2008 BY: JSM/MLM LWT: 05/15/2008 | |
| SHEET 1 OF 1 | |

THE INFORMATION CONTAINED HEREIN IS THE PROPERTY OF CHASSIS PLANS, LLC. IT IS PROVIDED AS IS WITHOUT WARRANTY OF ANY KIND, INCLUDING MERCHANTABILITY. THIS DRAWING MAY NOT BE REPRODUCED OR TRANSMITTED IN ANY FORM OR BY ANY MEANS, ELECTRONIC OR MECHANICAL, INCLUDING PHOTOCOPYING, RECORDING, OR BY ANY INFORMATION STORAGE AND RETRIEVAL SYSTEM, WITHOUT THE EXPRESS WRITTEN PERMISSION OF CHASSIS PLANS, LLC. CHASSIS PLANS, LLC SHALL BE LIABLE FOR ANY DAMAGES, INCLUDING REASONABLE ATTORNEY'S FEES, ARISING OUT OF OR FROM THE USE OF THIS DRAWING. CHASSIS PLANS, LLC SHALL BE LIABLE FOR ANY DAMAGES, INCLUDING REASONABLE ATTORNEY'S FEES, ARISING OUT OF OR FROM THE USE OF THIS DRAWING.

TOLERANCES ARE: DIMENSIONS: .005" .010" .015" .020" .030" .040" .050" .060" .070" .080" .090" .100" .125" .150" .175" .200" .250" .300" .375" .500" .625" .750" .875" 1.000"
 SCALE: NONE

CHASSIS PLANS
 8286 Arco Pkwy
 San Diego, CA 92123
 (619) 444-1111
 www.chassisplans.com