

CHASSIS PLANS

CPS215



- **Rack Mount—Only 1RU (1.75")**
- **Keyboard w/ Trackball or Touch Pad**
- **Samsung 15" TFT LCD**
- **1024 x 768 XGA Max Resolution**
- **16.7Million Display Colors**
- **Lockout Slides to Prevent Movement**
- **Captive Thumb Screws**

The CPS215 is a high performance 1U 15" LCD display/keyboard drawer. The display is a high quality Samsung 15" TFT LCD with a maximum resolution of 1024 x 768. Included is a high quality low profile 83 key keyboard with integrated track ball or touch pad. The display is stowed flat behind the keyboard and tilts up for use. The drawer is held closed by two captive thumb screws. Lock out ball bearing slides are included along with mounting brackets to allow installation in any standard 19" rack, 26" to 36" deep.

The display offers 300:1 contrast ratio and a brightness of 250cd/m². The response time is a fast 12.5mS and the viewing angle is 115° vertical and 140° horizontal. Video input is via a standard high density DB15 and the keyboard is available with either PS/2 or USB connections.

A variety of KVM switches can be fitted to the rear to allow this one display/keyboard to control up to 16 computers.

As with all Chassis Plans products, a wide variety of custom options are available including paint color, customer logo, touch screens, contrast filters, transmissive daylight modification, and hard coated vandal shields. Lightweight aluminum versions are available for transit case installation.



The Original Industrial Computer Source®

Chassis Plans · 8295 Aero Place · San Diego · CA · 92123
Phone (858) 571-4330 · Fax (858) 571-6146
saleseng@chassisplans.com
www.chassis-plans.com
© 2005 Chassis Plans

Dimensions

19" (wide) x 1.75" (high)
Mounting for 26" to 36" rack depth

Display

15" SAMSUNG TFT/LCD Panel
Display Resolution: XGA 1024x768
Display Colors: 16.7 Million
Display area: 304.1mm x 228.1mm (15" diagonal)
Contrast Ratio: 300:1 typical
Brightness: 250 cd/m2 typical
Pixel Pitch: 0.297mm x 0.297mm
Viewing Angle (U/D/L/R): 55/60/70/70 deg
Response Time (mS @ 25°C): <12.5
Connector: 15-pin high density DB-15
Power Management: EPA Energy Star, VESA DPMS

Display Resolution Modes

VESA VGA/SVGA/XGA
Recommended Resolution: 1024x768 @ 60Hz
640 x 350 @ 60Hz
640 x 400 @ 70Hz
Mac VGA
640 x 480 @ 60,72,75Hz
Mac SVGA
720 x 400 @ 70Hz
Mac XGA
800 x 600 @ 56,60,72,75Hz
1024 x 768 @ 60,70,75Hz

On Screen Display

Adjustment

Brightness
Contrast
Clock
Phase
Auto Adjust

Color Temp

6500K/9300K/User

Setup

Image (Hor Position, Vert Position, Gamma
OSD (Language, Color, Position, Duration, Lock)
Mode Recall
Backlight
Auto Sleep

Keyboard

PS/2 or USB Connection
Tactile Keystroke
5,000,000 lifecycles per switch
Power: +5 DC @ 100 mA max
Synchronous 8-bit data

Trackball Option

Integrated in keyboard
16mm ball
PS/2 Compatible
Various resolution from 20—6400 dpi
Tracking speed 500 mm/sec
Two "mouse" keys



Touch Pad Option

Integrated in Keyboard
Three 'mouse' keys

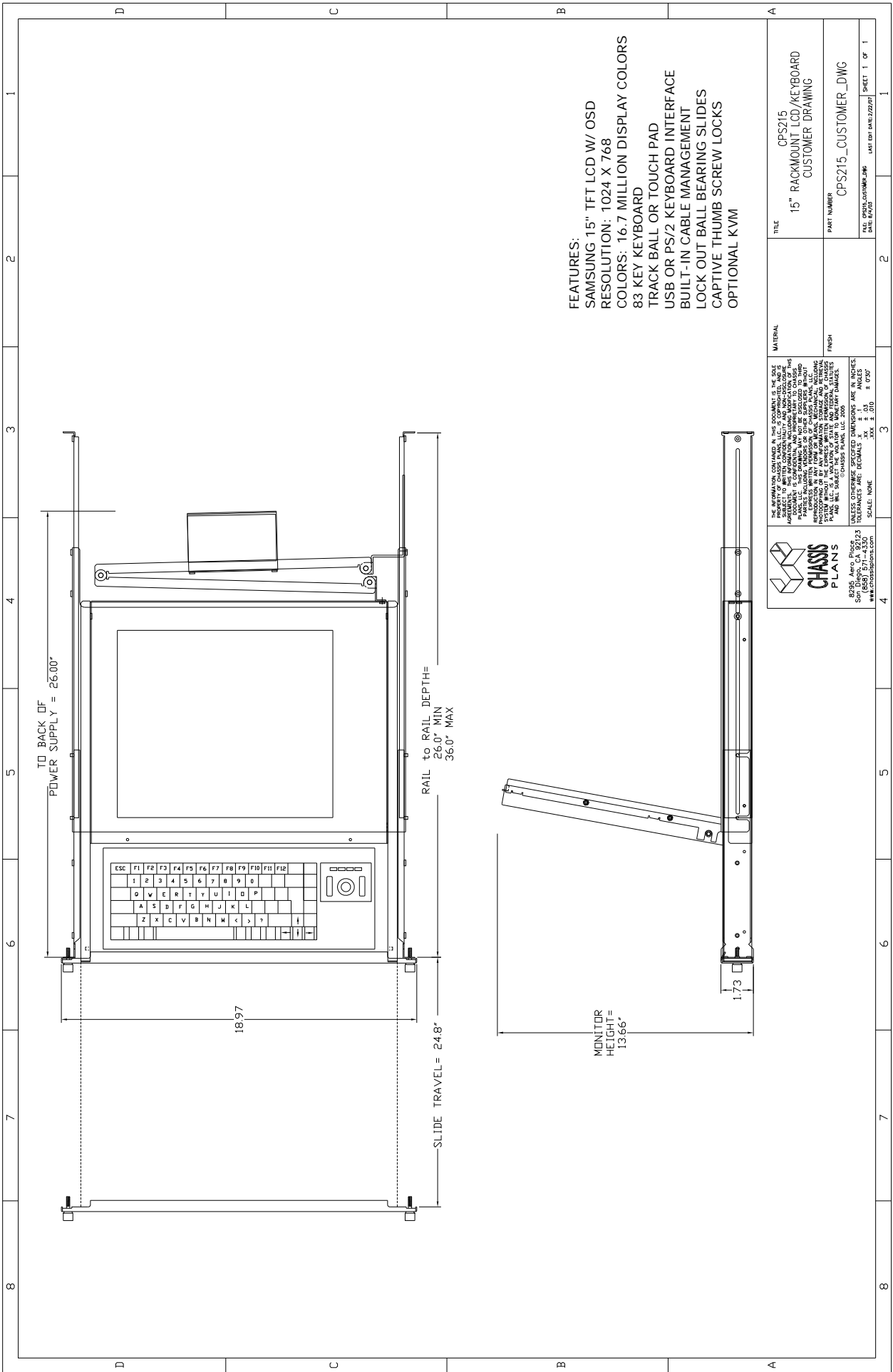


Agency Approvals

FCC-B, EMI/EMC/CE/BSMI

Ordering Guide

Model	Pointing Device	Keyboard Interface
CPS215-UTB	Trackball	USB
CPS215-UTP	Touch Pad	USB
CPS215-PTB	Trackball	PS/2
CPS215-PTP	Touch Pad	PS/2



FEATURES:
 SAMSUNG 15" TFT LCD W/ OSD
 RESOLUTION: 1024 X 768
 COLORS: 16.7 MILLION DISPLAY COLORS
 83 KEY KEYBOARD
 TRACK BALL OR TOUCH PAD
 USB OR PS/2 KEYBOARD INTERFACE
 BUILT-IN CABLE MANAGEMENT
 LOCK OUT BALL BEARING SLIDES
 CAPTIVE THUMB SCREW LOCKS
 OPTIONAL KVM

THE INFORMATION CONTAINED IN THIS DOCUMENT IS THE SOLE PROPERTY OF CHASSIS PLANS, INC. AND IS UNCLASSIFIED AND UNCONTROLLED. THIS DOCUMENT IS CONFIDENTIAL AND IS NOT TO BE REPRODUCED OR TRANSMITTED IN ANY FORM OR BY ANY MEANS, INCLUDING PHOTOCOPYING, RECORDING, OR BY ANY INFORMATION STORAGE AND RETRIEVAL SYSTEM WITHOUT THE EXPRESS WRITTEN PERMISSION OF CHASSIS PLANS, INC. ANY UNAUTHORIZED REPRODUCTION OR USE OF THIS DOCUMENT IS STRICTLY PROHIBITED AND WILL SUBJECT THE USER TO SEVERE DAMAGES.	
TITLE	CPS215 15" RACKMOUNT LCD/KEYBOARD CUSTOMER DRAWING
MATERIAL	
FINISH	
DATE: 08/20/03	FILE: CPS215_CUSTOM.DWG
DATE: 08/20/03	LAST EDIT DATE: 08/20/03
DATE: 08/20/03	SHEET: 1 OF 1

CHASSIS PLANS
 8295 Aero Place
 San Diego, CA 92123
 Phone: 619-444-3200
 www.chassisplans.com