

# CHASSIS PLANS

## CPCSD1-15L



- **Rack Mount—Only 1RU (1.75")**
- **Very Short 20" Mounting Depth**
- **Light Weight**
- **Keyboard w/ Trackball or Touch Pad**
- **Samsung 15" TFT LCD**
- **1024 X 768 Max Resolution**
- **16.7Million Display Colors**
- **Lockout Slides to Prevent Movement**
- **Captive Thumb Screws**

The CPCSD1-15L is a very light, very short high performance 1U clamshell 15" LCD display/keyboard drawer. The display is a high quality Samsung 15" TFT LCD with a maximum resolution of 1024 X 768. Included is a high quality low profile 83 key keyboard with integrated track ball or touch pad. The display folds forward over the keyboard and tilts up for use. The drawer is held closed by two captive thumb screws. Lock out ball bearing slides are included along with mounting brackets to allow installation in any standard 19" rack, 19.25" to 35" deep.

The CPCSD1-15L is optimized for use in transit cases because of the light weight and short depth. It is also ideally suited for mobile applications; mounted in vehicles for military use, aircraft installation or oil exploration.

The display offers 300:1 contrast ratio and a brightness of 250cd/m<sup>2</sup>. The response time is a fast 12.5mS and the viewing angle is 115° vertical and 140° horizontal. Video input is via a standard high density DB15 and the keyboard is available with either PS/2 or USB connections.

As with all Chassis Plans products, a wide variety of custom options are available including paint color, customer logo, touch screens, contrast filters, transmissive daylight modification, and hard coated vandal shields.



## Dimensions

19" (wide) x 1.75" (high)  
Mounting for 19.25" to 35" rack depth

## Display

15" SAMSUNG TFT/LCD Panel  
Display Resolution: XGA 1024x768  
Display Colors: 16.7 Million  
Display area: 304.1mm x 228.1mm (15" diagonal)  
Contrast Ratio: 300:1 typical  
Brightness: 250 cd/m2 typical  
Pixel Pitch: 0.297mm x 0.297mm  
Viewing Angle (U/D/L/R): 55/60/70/70 deg  
Response Time (mS @ 25°C): <12.5  
Connector: 15-pin high density DB-15  
Power Management: EPA Energy Star, VESA DPMS

## Display Resolution Modes

VESA VGA/SVGA/XGA  
Recommended Resolution: 1024x768 @ 60Hz  
640 x 350 @ 60Hz  
640 x 400 @ 70Hz  
Mac VGA  
640 x 480 @ 60,72,75Hz  
Mac SVGA  
720 x 400 @ 70Hz  
Mac XGA  
800 x 600 @ 56,60,72,75Hz  
1024 x 768 @ 60,70,75Hz

## On Screen Display

### Adjustment

- Brightness
- Contrast
- Clock
- Phase
- Auto Adjust

### Color Temp

6500K/9300K/User

### Setup

- Image (Hor Position, Vert Position, Gamma)
- OSD (Language, Color, Position, Duration, Lock)
- Mode Recall
- Backlight
- Auto Sleep

## Keyboard

PS/2 or USB Connection  
Tactile Keystroke  
5,000,000 lifecycles per switch  
Power: +5 DC @ 100 mA max  
Synchronous 8-bit data

## Trackball Option

Integrated in keyboard  
16mm ball  
PS/2 Compatible  
Various resolution from 20—6400 dpi  
Tracking speed 500 mm/sec  
Two "mouse" keys



## Touch Pad Option

Integrated in Keyboard  
Three 'mouse' keys

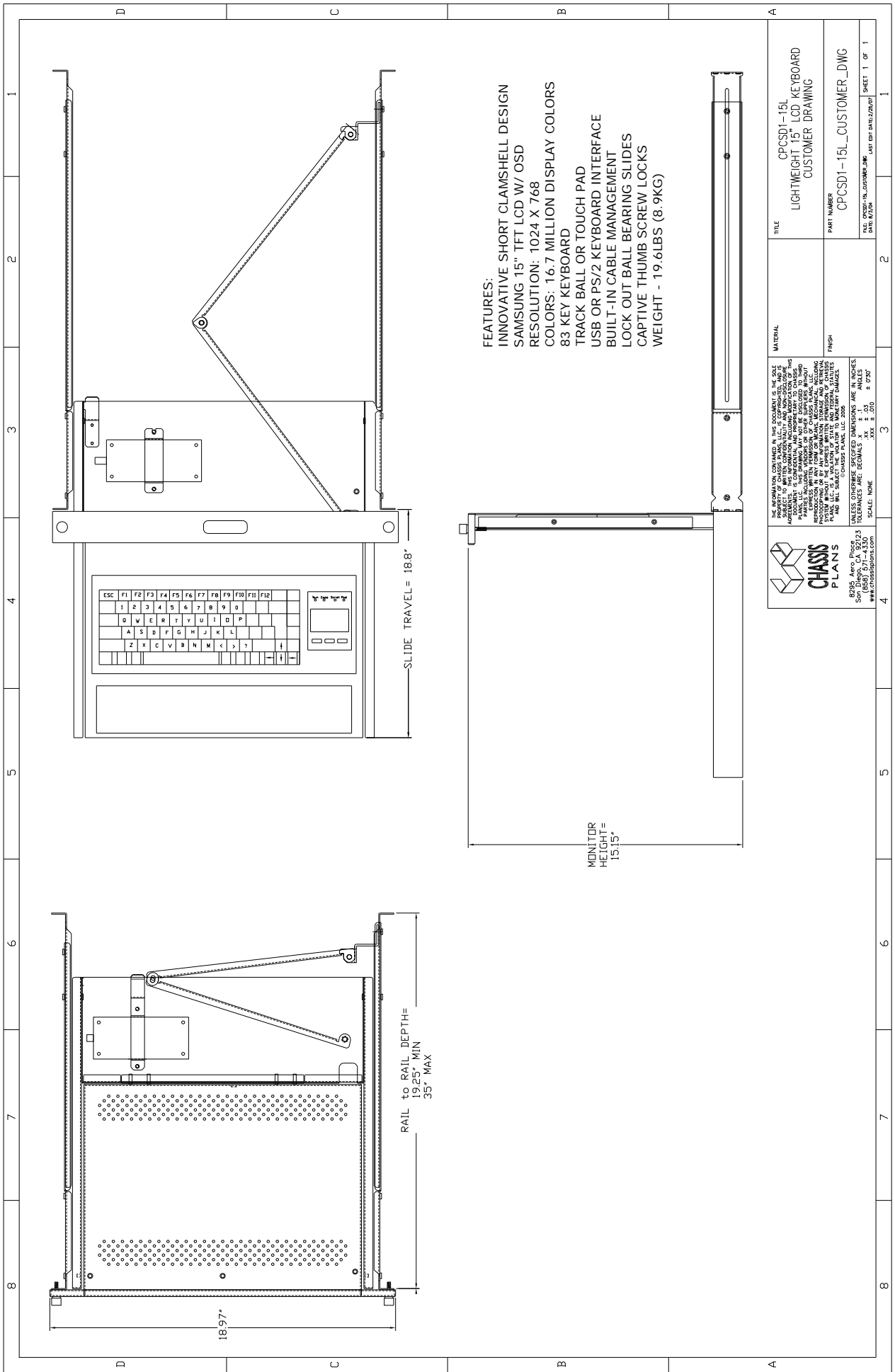


## Agency Approvals

FCC-B, EMI/EMC/CE/BSMI

## Ordering Guide

Model	Pointing Device	Keyboard Interface
CPCSD1-15L-UTB	Trackball	USB
CPCSD1-15L-UTP	Touch Pad	USB
CPCSD1-15L-PTB	Trackball	PS/2
CPCSD1-15L-PTP	Touch Pad	PS/2



- FEATURES:**  
 INNOVATIVE SHORT CLAMSHELL DESIGN  
 SAMSUNG 15" TFT LCD W/ OSD  
 RESOLUTION: 1024 X 768  
 COLORS: 16.7 MILLION DISPLAY COLORS  
 83 KEY KEYBOARD  
 TRACK BALL OR TOUCH PAD  
 USB OR PS/2 KEYBOARD INTERFACE  
 BUILT-IN CABLE MANAGEMENT  
 LOCK OUT BALL BEARING SLIDES  
 CAPTIVE THUMB SCREW LOCKS  
 WEIGHT - 19.6LBS (8.9KG)

MONITOR  
 HEIGHT=  
 15.15"

SLIDE TRAVEL= 18.8"

RAIL to RAIL DEPTH=  
 19.25" MIN  
 35" MAX



8030 Aero Procs 23  
 Shop (858) 571-4330  
 www.chassisplans.com

THE INFORMATION CONTAINED IN THIS DOCUMENT IS THE SOLE PROPERTY OF CHASSIS PLANS. IT IS UNCLASSIFIED AND NON-PROLIFERATION SUBJECT TO UNITED STATES PATENT AND TRADE OFFICE RIGHTS. THIS DOCUMENT IS CONFIDENTIAL AND PROPRIETARY TO CHASSIS PLANS. IT IS NOT TO BE REPRODUCED, COPIED, DISSEMINATED, OR OTHERWISE MADE PUBLIC IN ANY MANNER WITHOUT THE WRITTEN PERMISSION OF CHASSIS PLANS. ALL RIGHTS ARE RESERVED. CHASSIS PLANS WILL NOT BE RESPONSIBLE FOR ANY DAMAGE TO PROPERTY OR PERSONS ARISING FROM THE USE OF THIS DOCUMENT. CHASSIS PLANS, LLC 2006

UNLESS OTHERWISE SPECIFIED DIMENSIONS ARE IN INCHES.  
 TOLERANCES ARE: DECIMALS .XX ± .03  
 ANGLES .XX ± .01  
 SCALE: NONE

TITLE	CPCSD1-15L LIGHTWEIGHT 15" LCD KEYBOARD CUSTOMER DRAWING
MATERIAL	
FINISH	
PART NUMBER	CPCSD1-15L_CUSTOMER_DWG
FILE: CPCSD1-15L_CUSTOMER_DWG	DATE: 6/2/04
LAST ED: BAREZZI/PT	SHEET: 1 OF 1