

C7CHASSIS

ROBUST 4U ENCLOSURE

RUGGED ENTERPRISE CLASS

SYSTEMS ENGINEERED TO PERFORM™



The C7 Series chassis represent the next generation of RAID capable server chassis providing high performance in a cost effective 4U rackmount enclosure. Feature rich, the C7 Series is a solid, robust design which will meet the most rigorous and demanding requirements.

FEATURES

- 4U x 26.4-inch (671mm) design
- Supports EATX server class motherboards
- Locking front door provides drive security
- 460-1000 Watt PS/2 or redundant power supply
- Six 5.25-inch and one 3.5-inch external drives
- One 3.25-inch plus one optional 3.25-inch HD
- Hold-down bar to secure installed feature cards
- Removable rack ears for bench top applications
- Four hot swap 90mm 51CFM fans
- Chassis cooling system alarm board
- Front panel air filter

SUPPORT

- Superior pre- and post-sales technical support
- All products carry a two year limited warranty

CUSTOMIZATION

- Custom paint and logo available
- Custom chassis features to fit customer requirements
- Several fan options
- Turnkey Configured Systems to Customer Spec



The Original Industrial Computer Source®

Chassis Plans · 8295 Aero Place · San Diego · CA · 92123
Phone (858) 571-4330 · Fax (858) 571-6146
saleseng@chassisplans.com
www.chassisplans.com
© 2007 Chassis Plans

C7CHASSIS

The enclosure is constructed of 18 gauge steel, clear zinc plated for corrosion protection and an attractive appearance. The front panel is attractively detailed and is of heavier gauge than the chassis.

There is a huge amount of drive storage with the provided six front accessible 5-1/4 inch drive bays, one front accessible 3-1/2 inch drive bay, one internal 3-1/2 inch drive mounting and one optional internal 3-1/2 inch drive. Low cost SATA drive carriers can be used to build a RAID instead of using expensive SCA SCSI drives.

A full width lockable door covers and protects the drives. Accessible behind the door is the power and reset switches. The drive and alarm LED's are mounted on the door.

A full width filter is provided behind the door and is easily accessed for cleaning. Cooling is provided by four 90mm 51CFM hot swap fans.

An optional alarm status board monitors fan operation and chassis temperature. An alarm is sounded and contact closure is available for an alarmed state.

The C7Chassis provides for mounting an EATX motherboard (12x13"). An innovative card hold-down mechanism assures cards stay seated in high-G environments such as shipping.

Dimensions (W x H x D)

17 x 6.95 x 26.4-inch (432 x 176.5 x 670mm)

Motherboard Mounting

Accepts EATX (12x13") server class motherboard

Front Door

Locking front door w/ air filter

Front Door Indicators

Power LED
Two Fan Status LEDs
Fault LED
Two Disk activity LED

Front Panel Controls/Connections

Power on/off switch
Four system reset switches
Power Failure Alarm reset switch
Fan Failure Alarm reset switch
Optional Two USB connectors

Drive Capacity

Six 5.25-inch front drive bays
One 3.5-inch front drive bay
One 3.5-inch internal hard drive
One optional 3.5-inch internal hard drive

Cooling Fans

Four hot swap 90mm 51CFM fans
Air filter—1/4" Thick 30PPI
Optional cooling system alarm board

Rear Panel Details

7 Plug-in card slots
ATX I/O shield
Knockouts for 2 DB9, 1 DB15, 1 DB25 and 1 SCSI connectors

Power Supply

Rear mounted PS/2 form factor
460W-1KW recommended
Redundant and DC input options

Construction

18 gauge cold rolled steel
Clear zinc plated
Hold-down bar

Color

Black
Medium texture

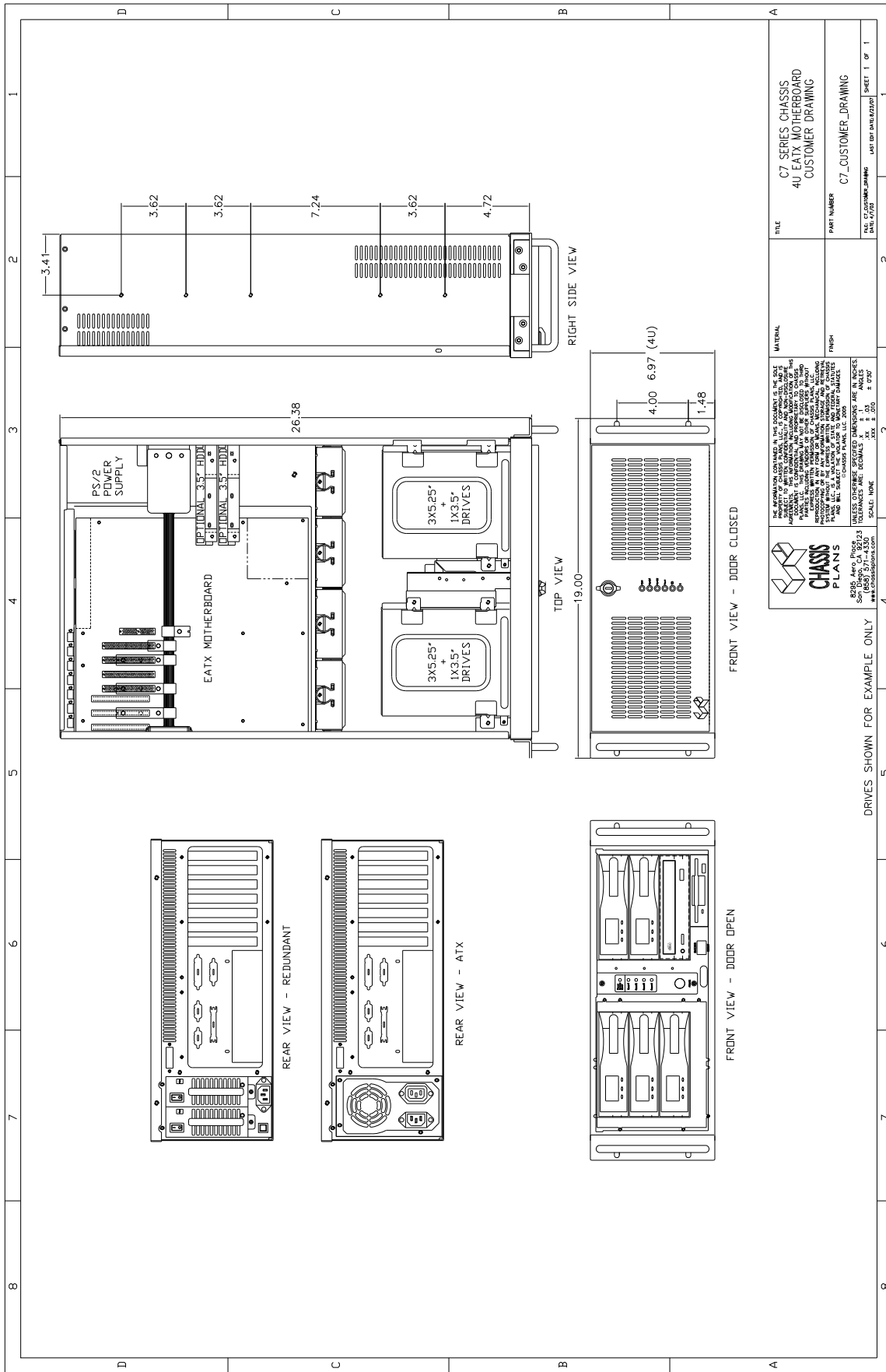
Weight

40lbs. (18.2Kg) representative system

Environment

Operating and storage temperature, shock and humidity is dependant on installed components





<p>THE APPROVAL YOU CONFIRM BY THIS SIGNATURE IS THE EXCLUSIVE AUTHORITY TO PRODUCE AND DISTRIBUTE THIS DRAWING. ANY REVISIONS TO THIS DRAWING MUST BE APPROVED BY THE ORIGINAL DESIGNER. THIS DRAWING IS THE PROPERTY OF CHASSIS PLANS AND IS NOT TO BE REPRODUCED OR TRANSMITTED IN ANY FORM OR BY ANY MEANS, ELECTRONIC OR MECHANICAL, INCLUDING PHOTOCOPYING, RECORDING, OR BY ANY INFORMATION STORAGE AND RETRIEVAL SYSTEM, WITHOUT THE WRITTEN PERMISSION OF CHASSIS PLANS. CHASSIS PLANS WILL NOT BE HELD RESPONSIBLE FOR ANY DAMAGES, INCLUDING CONSEQUENTIAL DAMAGES, ARISING FROM THE USE OF THIS DRAWING.</p> <p>UNLESS OTHERWISE SPECIFIED DIMENSIONS ARE IN INCHES TOLERANCES ARE DECIMALS: .X, .X, .X, .X, .X, .X, .X, .X, .X, .X SCALE: NONE</p> <p>82595 Auto. Price: \$1,320.00 82595 Manual Price: \$1,320.00 www.chassisplans.com</p>	
TITLE	C7 SERIES CHASSIS 4U EATX MOTHERBOARD CUSTOMER DRAWING
PART NUMBER	C7_CUSTOMER_DRAWING
DATE	10/20/2010
DESIGNER	CHASSIS PLANS
DATE	10/20/2010
SCALE	1:1
SHEET	1 OF 1

