

CHASSIS PLANS

C3000



Advantages

- Compact 4U x 17.8-inch (452mm) design
- Locking front door provides drive security
- 300W- 460W ATX power supply
- Four drive bays with three 5.25-inch and one 3.5-inch external drive bays
- Hold-down bar to secure installed feature cards
- Removable rack ears for benchtop applications
- One 51CFM chassis fan to protect drives and feature cards with option of second 51CFM fan

Support

- Superior pre-sales and post-sales technical support
- All products carry a one year limited warranty

Customization

- Custom paint and logo services available
- Front panel includes an indicator for disk drive activity.
- Two 51CFM front-mounted fans provide positive pressurization of chassis while the front mounted filter keeps the air clean inside.



NEXT GENERATION SOLUTION..

C3000

The C3 Series chassis is a medium performance design in a low cost 4U rackmount enclosure. Feature rich, the C3 Series is a solid, robust design which will meet the most rigorous and demanding requirements.

The enclosure is constructed of 18 gauge steel, clear zinc plated for corrosion protection and an attractive appearance. The front panel is attractively detailed and is of heavier gauge than the chassis.

There is more than ample drive storage with the provided three front accessible 5-1/4 inch drive bays, one front accessible 3-1/2 inch drive bay and an internal 3-1/2 inch drive mounting.

A lockable door with a plexiglas insert covers and protects the drives. Accessible behind the door is the power and reset switches as well as the power-on and drive activity LED's. The LED's are visible through the door when it is closed.

Cooling is provided by two hot swap 3.6" 51CFM fans. An air filter is mounted behind the front panel. The air filter can be easily removed by opening the drive door and pulling the filter housing out.

The C3 Chassis provides for mounting an ATX motherboard. The C3000 Chassis accepts a 14-slot passive backplane. An innovative card hold-down mechanism assures cards stay seated in high-G environments such as shipping.

SPECIFICATION

Dimensions

19" (wide) x 4U (6.95") (high) x 17.8" (deep)

Weight - 18KG / 37.5LBs

Drive Capacity

Three horizontal 5-1/4 inch half height drives - front accessible

One horizontal 3-1/2 inch x 1 inch drive - front accessible

One internal 3-1/2 inch drive mounted vertically

The drive cage is suspended on anti-vibration mounts.

Front Panel Controls

Power switch - black momentary with 2 position .100 header for board connection

Reset switch - red momentary with 2 position .100 header for board connection

Power LED - green with 3 position .100 header for board connection

Drive Activity - Amber with 2 position .100 header for board connection

Switch and LED connectors are labeled at the connector end.

Rear Panel Details

C3 - 7 Plug-in card slots

Knockouts for 2 DB9, 1 DB15, 1 DB25 and 1 SCSI connectors

C3000 - 14 Plug-in card slots

Knockouts for 2 DB9 connectors

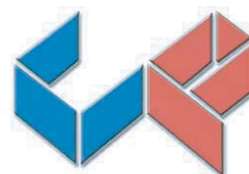
Cooling

Two hot swap 3.6 inch 51CFM ball bearing fans

Positive chassis pressure

30PPI filter installed

Fan Options: thermister regulated fan speed, 3-wire tach signal



CHASSIS
PLANS

SPECIFICATION CONT.

Power Supply

300W ATX (2.03 ATX compliant)

Optional 300W redundant ATX

PS/2 Style supply

AC Input - Zippy HG2, HP2, PSM, PSL, AX2, SP2, LP2, MP2, SPE

Redundant AC Input - Zippy MRT, MRP, MRW, MRG,

DC Input - Zippy DB2 (24VDC), DD2 (48VDC), MB2 (24VDC), MD2 (48VDC)

Motherboard Mounting (C3 Models)

Standard 9.6 x 12 inch ATX motherboard

Motherboard adapter plate accommodates any motherboard

Passive Backplane (C3000 Models)

14-Slot ISA/PCI accommodated

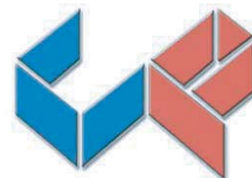
Available backplanes:

BP14ISA - 14 ISA slots

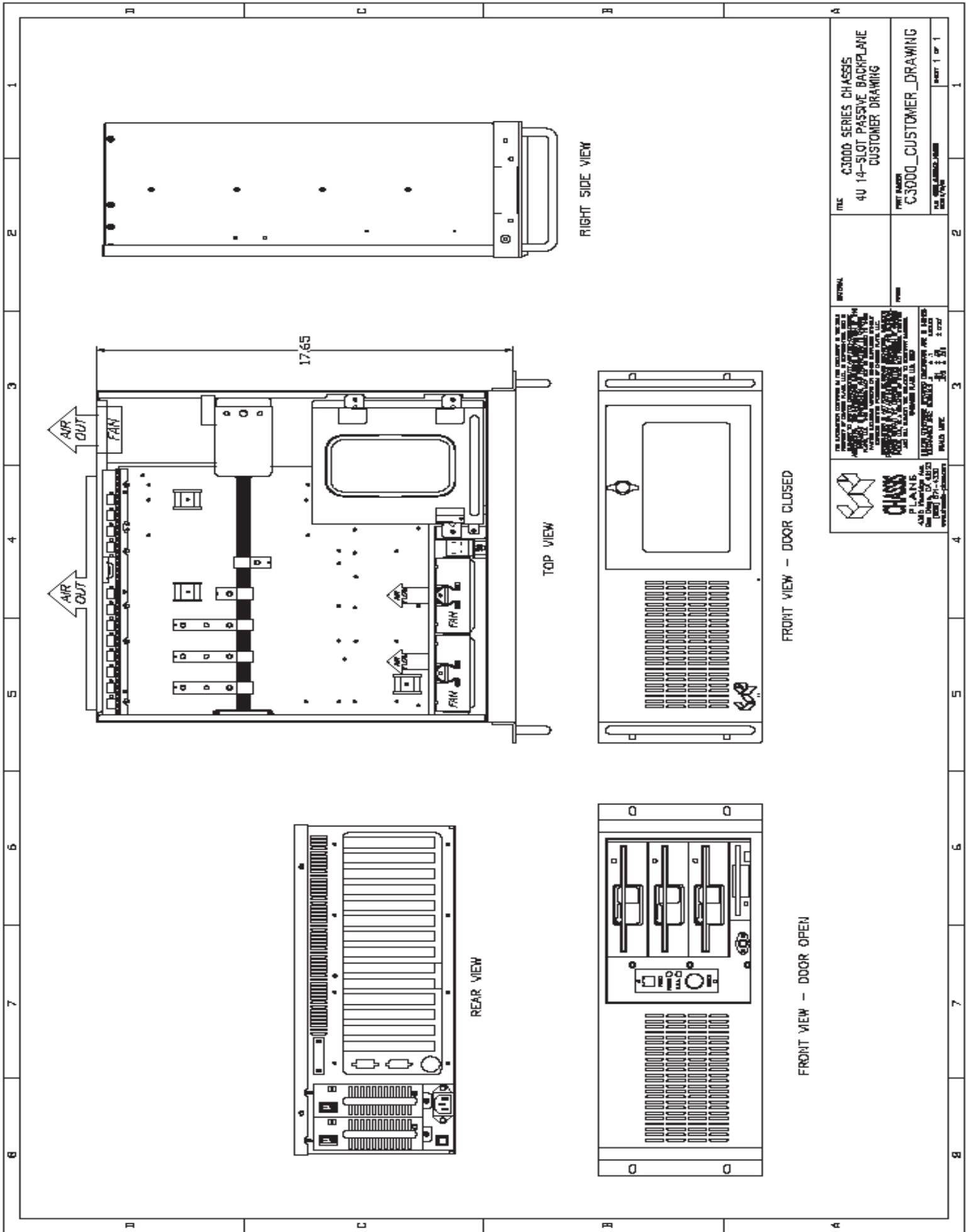
BP14ISA8PCI4 - 2 CPU, 8 ISA, 4 PCI

BP14S2 - Split 2x 2 CPU, 1 ISA, 4 PCI

BP14S4 - Split 4x 2 CPU, 3 PCI



**CHASSIS
PLANS**



<p>CHASSIS PLANS 4360 VIEWRIDGE AVE STE. B SAN DIEGO, CA 92123 (858) 571-4330</p>		<p>ALL DIMENSIONS IN INCHES UNLESS OTHERWISE SPECIFIED DIMENSIONS ARE TO CENTER UNLESS OTHERWISE SPECIFIED TOLERANCES: FRACTIONS DECIMALS FRACTIONS: ±.005 ±.010 ±.015 DECIMALS: ±.005 ±.010 ±.015</p>	<p>DATE: 08/14/2018 TIME: 10:00 AM USER: JEFFREY</p>
TITLE	C3000 SERIES CHASSIS 4U 14-SLOT PASSIVE BACKPLANE CUSTOMER DRAWING	<p>DATE: 08/14/2018 TIME: 10:00 AM USER: JEFFREY</p>	<p>DATE: 08/14/2018 TIME: 10:00 AM USER: JEFFREY</p>
PART NUMBER	C3000_CUSTOMER_DRAWING		
FILE	C3000 SERIES CHASSIS 4U 14-SLOT PASSIVE BACKPLANE CUSTOMER DRAWING		