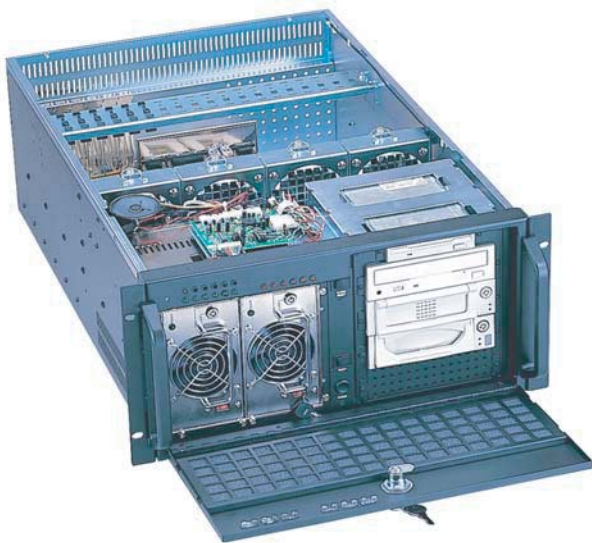


CHASSIS PLANS

B2CHASSIS



Advantages

- Compact 5U x 26.4-inch (671 mm) design
- Locking front door provides drive security
- 300W- 600W ATX single or redundant power supply
- Five front mount drive bays with four 5.25-inch and one 3.5-inch external drive bays
- Hold-down bar to secure installed feature cards
- Removable rack ears for benchtop applications
- Four 51CFM hot-swap internal fans with thermal management card installed along with removable air filter

Support

- Superior pre-sales and post-sales technical support
- All products carry a one year limited warranty

Customization

- Custom paint and logo services available



CHASSIS
PLANS

The Original Industrial Computer Source™

B2CHASSIS

The B2 Series chassis is a high performance design in a low cost 5U rackmount enclosure. Feature rich, the B2 Series is a solid, robust design which will meet the most rigorous and demanding requirements. This chassis is ideal for high density web server, back office server, firewall, proxy server and VPN gateway applications including collocation.

The enclosure is constructed of 18 gauge steel, clear zinc plated for corrosion protection and an attractive appearance. The front panel is attractively detailed and is of heavier gauge than the chassis.

There is a huge amount of drive space with the four front accessible 5-1/4" drive bays. This allows for a low cost RAID implementation using IDE, SATA or SCSI drives. One external 3.5 inch drive bay is also available.

A door covers and protects the drives. Accessible behind the door is the power and reset switches as well as the power-on and drive activity LED's. The LED's are visible through the door when it is closed.

Cooling is provided by four fans 90mm 51CFM hot swap fans. Alternatively, three 120mm 90CFM fans can be installed. The fans provide tach signals for failure detection by the motherboard.

The B2 Chassis provides for mounting a standard EATX motherboard up to 12 x 13 inches. Seven plug-in cards can be installed.

Power is provided by single or redundant front accessible power supply. Front accessibility of the power and drives means very low MTTR in the event of a component failure.

Dimensions

19" (wide) x 5U (8.75") (high) x 26.4" (deep)

Drive Capacity

Five 5-1/4 inch drives - front accessible

One 3-1/2 inch drive - front accessible

Front Panel Controls

Power switch - Black momentary rocker with 2 position .100 header for board connection

Reset switch - Black pushbutton with 2 position .100 header for board connection

Power LED - green with 3 position .100 header for board connection

Drive Activity - Red with 2 position .100 header for board connection

Switch and LED connectors are labeled at the connector end.

Rear Panel Details

7 Plug-in card slot

ATX I/O Shield

Four DB9 connector knockouts

Two DB25 connector knockouts

Cooling

Four 90mm 51CFM fans with tach signal

Positive chassis pressure

-- or --

Three 120mm 90CFM fans with tach signal

Thermal Management Card

Monitors the following chassis parameters:

Audible alarm sounded on system failure

Rear panel mounted terminal block for NO/NC contact closure for external alarm

Fan operation

Chassis Over-temperature settable for 40, 50 & 60 deg. C alarm point

Two remote temperature probes

Power supply operation

Front panel indication of system alarm status

Power Supply

Front mounted single or redundant supply up to 600W, not included

Accepts Zippy ARI style power supplies, optional 12, 24 or 48VDC supplies available

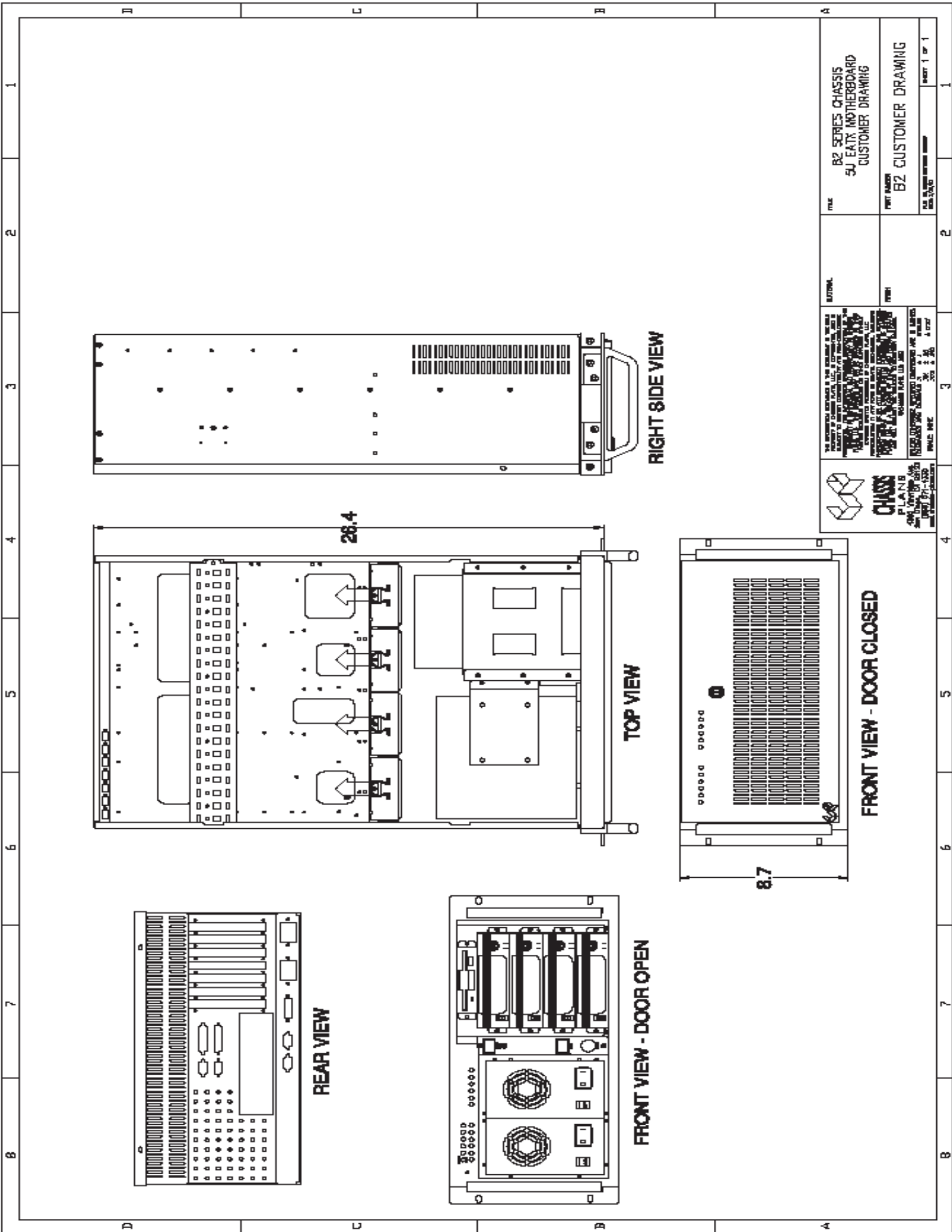
Motherboard Mounting

Standard EATX or ATX motherboard


Plug-in Cards

Accommodates seven plug-in I/O cards





FILE	B2 SERIES CHASSIS 5U EATX MOTHERBOARD CUSTOMER DRAWING
PART NAME	B2 CUSTOMER DRAWING
DATE	REV. 1 OF 1
DATE	REV. 1 OF 1


CHASSIS PLANS
 8295 AERO PLACE SUITE 200
 SAN DIEGO, CA 92123
 TEL: (858) 571-4330
 FAX: (858) 571-6146
 SALES@CHASSISPLANS.COM

THE INFORMATION CONTAINED HEREIN IS THE PROPERTY OF CHASSIS PLANS, LLC. IT IS INTENDED FOR THE USE OF THE CUSTOMER WHO HAS PURCHASED THIS DRAWING. IT IS NOT TO BE REPRODUCED, COPIED, OR TRANSMITTED IN ANY FORM OR BY ANY MEANS, ELECTRONIC OR MECHANICAL, INCLUDING PHOTOCOPYING, RECORDING, OR BY ANY INFORMATION STORAGE AND RETRIEVAL SYSTEM, WITHOUT THE WRITTEN PERMISSION OF CHASSIS PLANS, LLC.

CHASSIS PLANS, LLC
 8295 AERO PLACE SUITE 200
 SAN DIEGO, CA 92123
 TEL: (858) 571-4330
 FAX: (858) 571-6146
 SALES@CHASSISPLANS.COM