

# CHASSIS PLANS

## A2000



### Advantages

- Compact 6U x 26.4-inch (671mm) design
- Locking front door provides drive security
- 300W- 460W ATX or dual redundant power supply
- Seven front mount drive bays with four 5.25-inch and one 3.5-inch external drive bays
- Hold-down bar to secure installed feature cards
- Removable rack ears for benchtop applications
- Four 51CFM hot-swap internal fans with thermal management card installed along with removable air filter

### Support

- Superior pre-sales and post-sales technical support
- All products carry a one year limited warranty

### Customization

- Custom paint and logo services available
- Front panel includes an indicator for disk drive activity.
- Four 51CFM center mount fans provide positive air pressure inside of chassis while the front mounted filter keeps the air clean inside.



# NEXT GENERATION SOLUTION..

---

## A2000

The A2000 Series chassis is a high performance design in a low cost 6U rackmount enclosure. Feature rich, the A2000 Series is a solid, robust design which will meet the most rigorous and demanding requirements. This chassis is ideal for I/O intensive applications such as telephony, data acquisition, Digital Video Recording (DVR), high density web server, back office server, firewall, proxy server and VPN gateway applications including collocation.

The enclosure is constructed of 18 gauge steel, clear zinc plated for corrosion protection and an attractive appearance. The front panel is attractively detailed and is of heavier gauge than the chassis.

There is a huge amount of drive space with the seven front accessible 5-1/4" drive bays. This allows for a low cost RAID implementation using SCSI or ATA drives. One external 3.5 inch drive is also available.

A door covers and protects the drives. Accessible behind the door is the power and reset switches as well as the power-on and drive activity LED's. The LED's are visible through the door when it is closed.

Cooling is provided by four 90mm 51CFM hot swap fans. The thermal management board monitors fan operation.

The A2000 Chassis provides for mounting a 20-slot passive backplane. A wide variety of backplanes are available offering different mixes of ISA and PCI slots. Depending on the CPU selection, up to 19 plug-in cards can be installed. The chassis is designed to accommodate split backplanes offering support for up to 4 splits.

Power is provided by rear mounted PS/2 style power supply. Several power supply options are available including redundant power.

# SPECIFICATION

---

## Dimensions

19" (wide) x 6U (10.45") (high) x 26.4" (deep)

## Drive Capacity

Seven 5-1/4 inch drives - front accessible

One 3-1/2 inch drive - front accessible

## Front Panel Controls

Power switch - Black momentary rocker with 2 position .100 header for board connection

Reset switch - Four pushbuttons with 2 position .100 header for board connection\*

Power LED - Green with 3 position .100 header for board connection

Drive Activity - Red with 2 position .100 header for board connection

Switch and LED connectors are labeled at the connector end.

\* Note: Four reset switches are provided for use with up to a 4 section segmented backplane.

## Rear Panel Details

20 Plug-in card slot

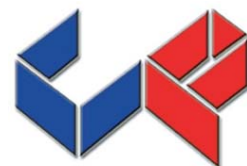
Four keyboard connector holes.

## Cooling

Four 90mm 51CFM hot swap fans

Positive chassis pressure

Full-width air filter located behind drive door.



CHASSIS  
PLANS

# SPECIFICATION CONT.

---

## **Thermal Management Board**

Monitors the following chassis parameters. Audible alarm sounded on system failure. Rear panel mounted terminal block for NO/NC contact closure for external alarm.

## **Fan operation**

Chassis over-temperature settable for 40, 50, 60 deg C alarm point

Two remote chassis temperature probes.

Power supply operation

Front panel indication of system alarm status

## **Power Supply**

Not included.

Rear mounted redundant style.

AC Input - Zippy RAH and RHH form factor

Optional 12, 24 or 48VDC supplies available

## **Passive Backplane**

20-Slot ISA/PCI accommodated

## **Available backplanes:**

BP20ISA - 20 ISA slots

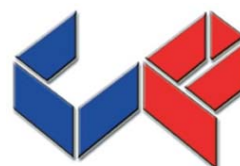
BP20ISA13PCI4 - 3 CPU, 13 ISA, 4 PCI

BP20ISAS4 - 20 ISA slots, Split 4 x 5

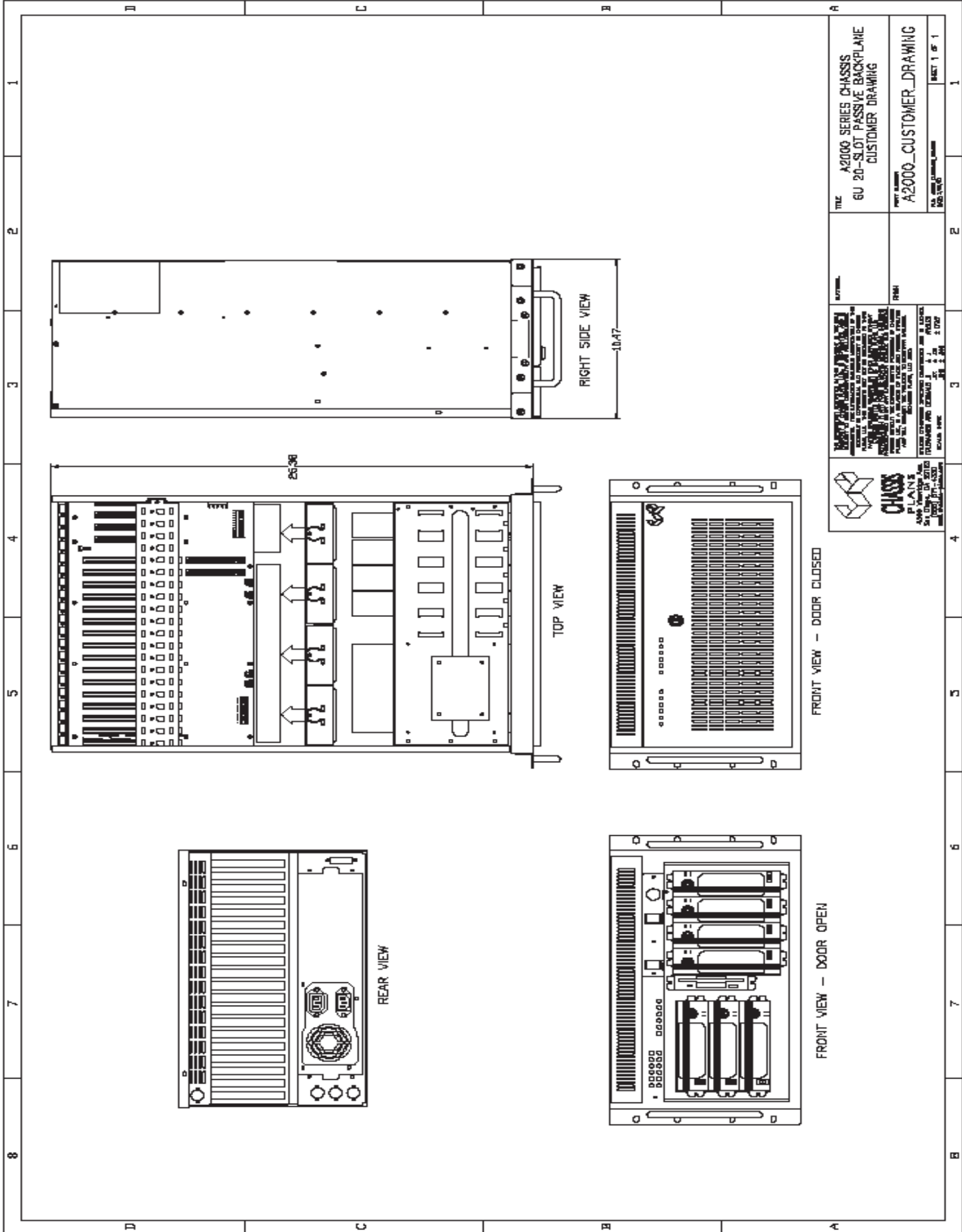
BP20S4 - Split 4x 2 CPU, 3 PCI

## **Plug-in I/O Cards**

Depending on configuration, accommodates up to 19 plug-in I/O cards



CHASSIS  
PLANS



<b>TITLE</b> A2000 SERIES CHASSIS 6U 20-SLOT PASSIVE BACKPLANE CUSTOMER DRAWING		<b>DATE</b> A2000_CUSTOMER_DRAWING		<b>PL. NO.</b> 001.0001	
<b>REV.</b> 1		<b>REV.</b> 1		<b>REV.</b> 1	
<b>DATE</b> 08/11/2010		<b>DATE</b> 08/11/2010		<b>DATE</b> 08/11/2010	
<b>DESIGNED BY</b> [Name]		<b>DESIGNED BY</b> [Name]		<b>DESIGNED BY</b> [Name]	
<b>CHECKED BY</b> [Name]		<b>CHECKED BY</b> [Name]		<b>CHECKED BY</b> [Name]	
<b>APPROVED BY</b> [Name]		<b>APPROVED BY</b> [Name]		<b>APPROVED BY</b> [Name]	
<b>DATE</b> 08/11/2010		<b>DATE</b> 08/11/2010		<b>DATE</b> 08/11/2010	
<b>SCALE</b> 1:1		<b>SCALE</b> 1:1		<b>SCALE</b> 1:1	
<b>PL. NO.</b> 001.0001		<b>PL. NO.</b> 001.0001		<b>PL. NO.</b> 001.0001	
<b>REV.</b> 1		<b>REV.</b> 1		<b>REV.</b> 1	
<b>DATE</b> 08/11/2010		<b>DATE</b> 08/11/2010		<b>DATE</b> 08/11/2010	
<b>DESIGNED BY</b> [Name]		<b>DESIGNED BY</b> [Name]		<b>DESIGNED BY</b> [Name]	
<b>CHECKED BY</b> [Name]		<b>CHECKED BY</b> [Name]		<b>CHECKED BY</b> [Name]	
<b>APPROVED BY</b> [Name]		<b>APPROVED BY</b> [Name]		<b>APPROVED BY</b> [Name]	
<b>DATE</b> 08/11/2010		<b>DATE</b> 08/11/2010		<b>DATE</b> 08/11/2010	
<b>SCALE</b> 1:1		<b>SCALE</b> 1:1		<b>SCALE</b> 1:1	
<b>PL. NO.</b> 001.0001		<b>PL. NO.</b> 001.0001		<b>PL. NO.</b> 001.0001	
<b>REV.</b> 1		<b>REV.</b> 1		<b>REV.</b> 1	
<b>DATE</b> 08/11/2010		<b>DATE</b> 08/11/2010		<b>DATE</b> 08/11/2010	